

# LLOYD TABLE COMPANY

## NICHOLAS ELEVATION / STATIONARY

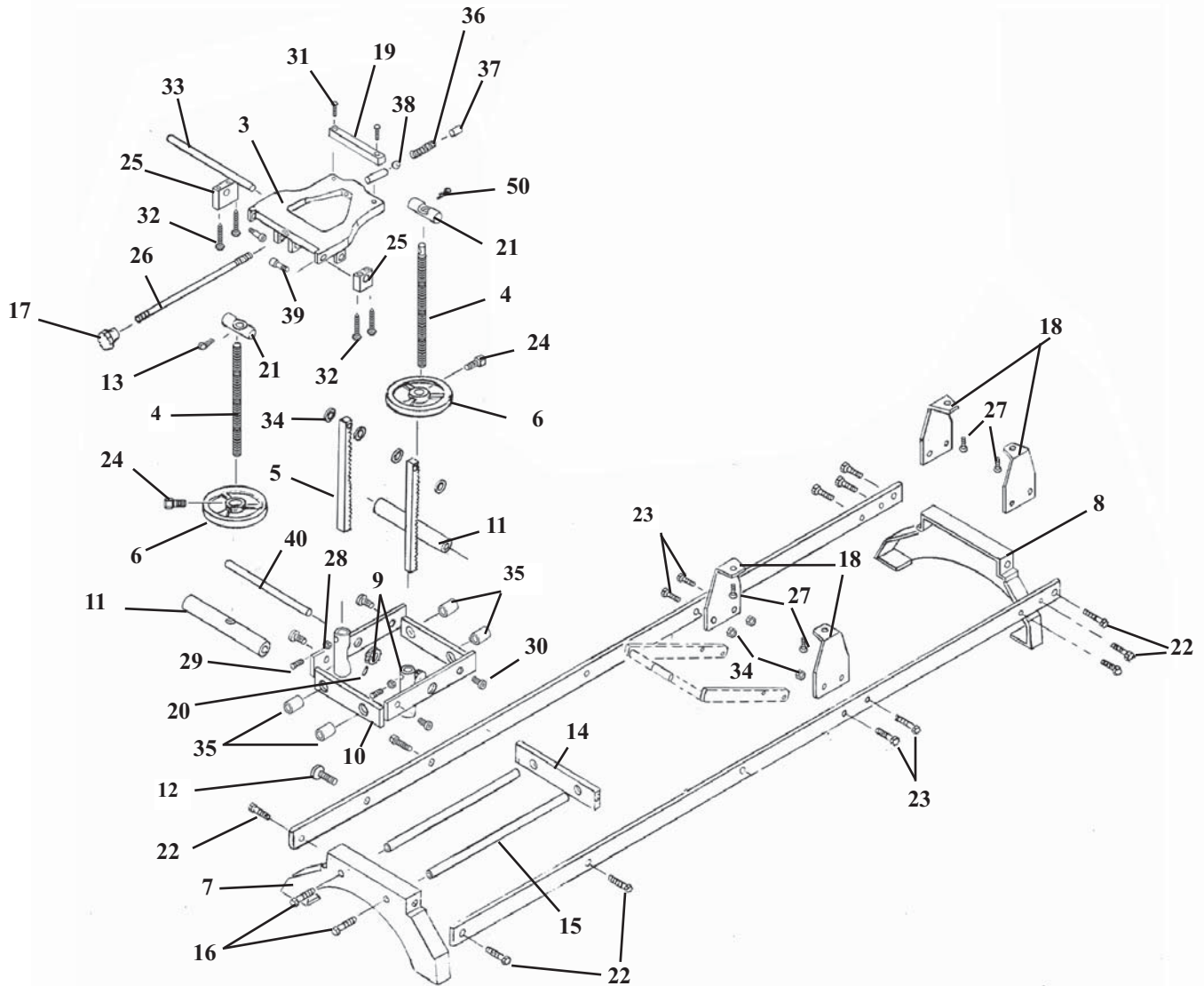
### OPERATION & PARTS MANUAL



**LLOYD**  
TABLE COMPANY

*Lloyd Table Company*  
102 W. Main Street \* Lisbon, IA 52253  
Phone 319-455-2110 Fax 319-455-2166  
Website [www.lloydtable.com](http://www.lloydtable.com)  
Email [sales@lloydtable.com](mailto:sales@lloydtable.com)  
Call Toll Free 1-800-553-7297

# NICHOLAS II FRAME ASS'Y



## 624952 - HEAD FRAME KIT

ITEM	DESCRIPTION	QTY
9	SPUR GEAR	1
10	SLIDE FRAME	1
51	AXLE ROD	1
54	ROLL PIN	2

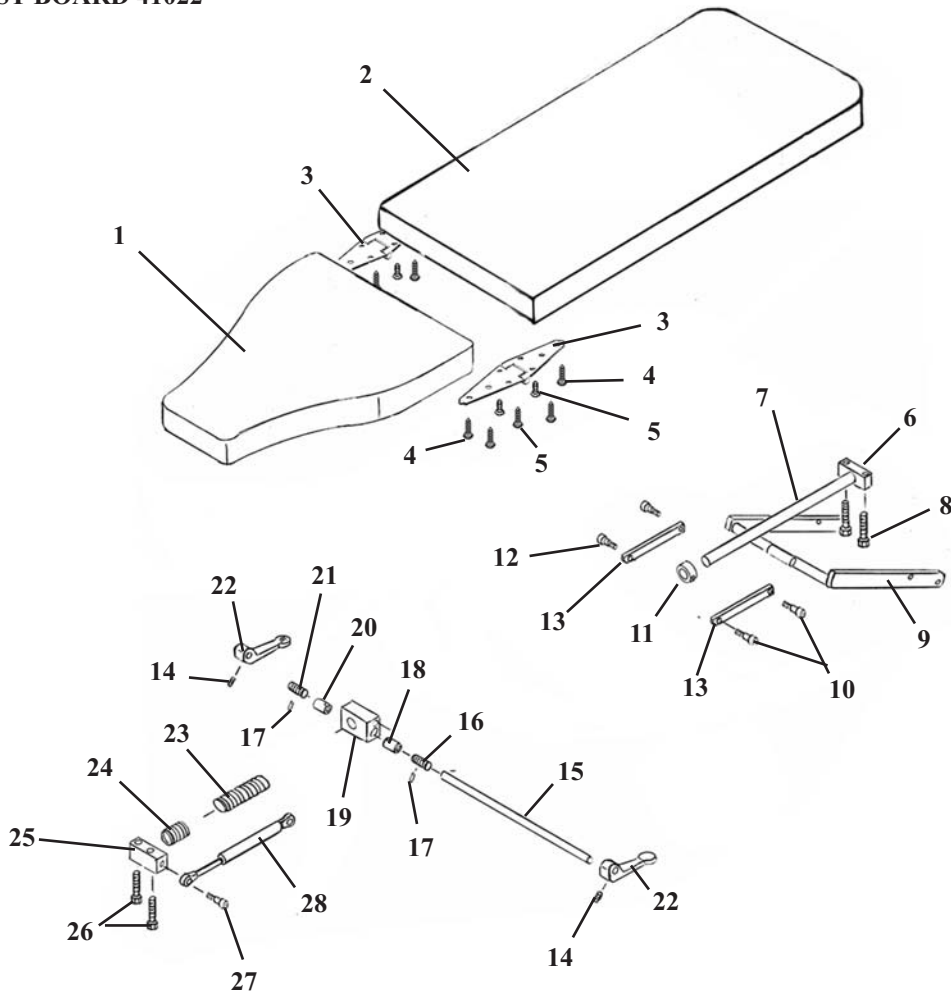
# NICHOLAS II FRAME ASS'Y

ITEM	PART NO.	DESCRIPTION	QTY.
1	57857	SIDE RAIL (RH)	1
2	59060	SIDE RAIL (LH)	1
3	57847	HEAD FRAME	1
4	57859	WORM GEAR ROD	2
5	57860	GEAR RACK	2
6	57861	HAND WHEEL	2
7	57846	FRONT LEG	1
8	57905	BACK LEG	1
9	30320	SPUR GEAR	2
10	57460	SLIDE FRAME ASS'Y	1
11	57466	AXLE BRACE	2
12	24181	LOCK ROD	1
13	22640	COTTER PIN 3/32 X 1	2
14	57465	SUPPORT PLATE	1
15	57469	GUIDE ROD,	2
16	20210	HEX HD. BOLT, 3/8-16UNC X 1/2	2
17	24150	ADJUSTMENT KNOB	1
18	57875	CUSHION BRACKET	4
19	41003	SPACER	1
20	22650	ROLL PIN, 1/8 RD X 3/4	2
21	57876	SUPPORT ROD	1
22	20215	HEX HD. BOLT, 5/16-18 NC X 3/4	14
23	20225	HEX HD. BOLT, 5/16 -18 NC 1 1/2	2
24	22235	SQUARE HD. SCREW, 5/16-18 NC X 3/4	2
25	57467	CONNECTING BLOCK	2
26	57468	TENSION ROD	1
27	22083	LAG SCREW, 1/4 X 1.00	5
28	21012	HEX NUT 1/4-20UNC	4
29	22119	SET SCREW, 1/4-20UNC X 1/2	4
30	22074	ALEN HD. CAP SCREW, 3/8-16UNC X 1/2	4
31	22417	WOOD SCREW, #6 X 3/4	3
32	22511	ROUND HD. WOOD SCREW, #10 X 1 1/2	4
33	57886	SUPPORT ROD	1
34	21750	WASHER, 5/16 ID	6
35	22850	NYLON BUSHING	4
36	57887	SPRING, 7/32 ID X 3/8 OD	1
37	57882	NYLON ROD, 3/8 DIA. X 1.00	1
38	22700	BALL 3/8 DIA.	1
39	20003	SOCKET HD. SHLD BOLT, 1/4-20 UNC X 7/16	2
40	57864	AXLE ROD 1/2 RD. X 9 7/8	1

# NICHOLAS II TABLE ASS'Y CHEST - BODY CUSHION

CHEST BOARD 41022

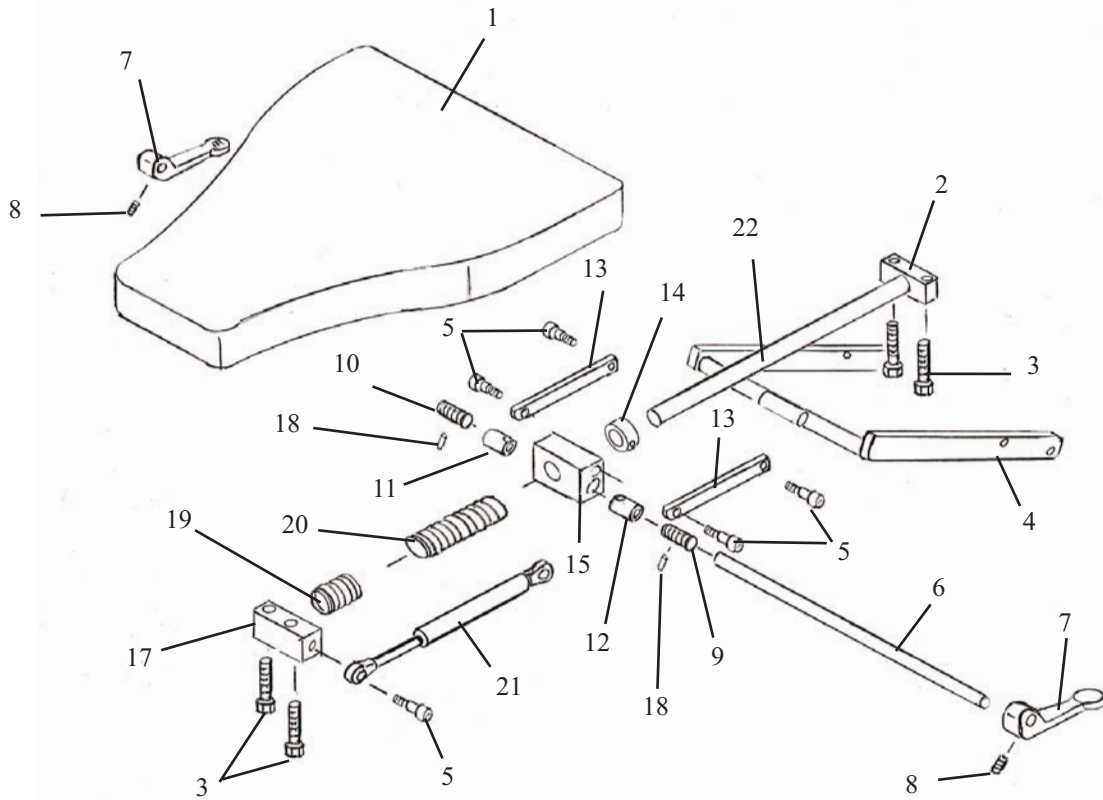
BODY BOARD 41033



# NICHOLAS II TABLE ASS'Y CHEST - BODY CUSHION

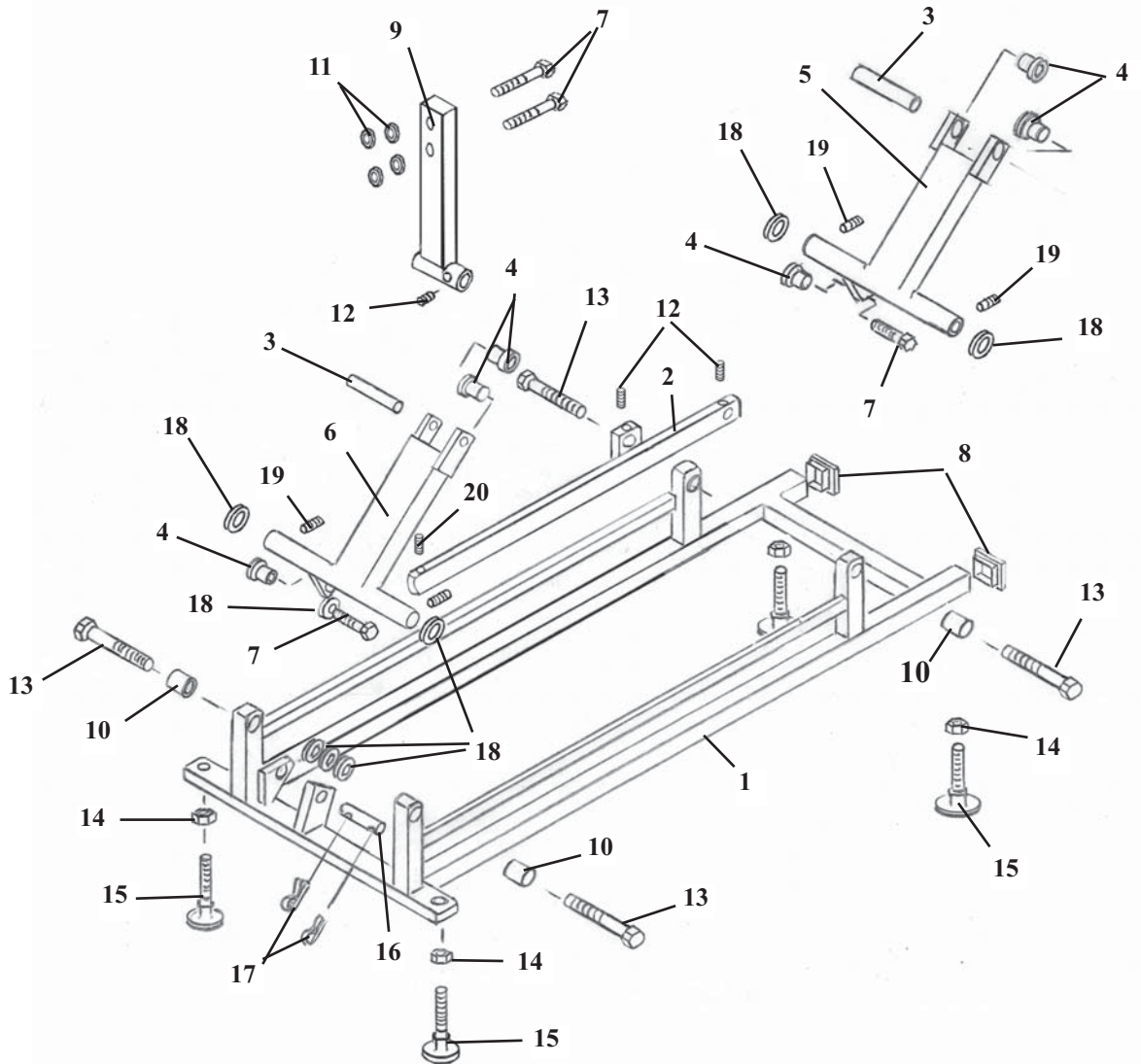
ITEM	PART NO.	DESCRIPTION	QTY.
1	41020	CHEST CUSHION	1
2	41027	PELVIC CUSHION	1
3	24296	STRAP HINGE	2
4	22508	SCREW, WOOD, FLAT HD. #9 X 3/4	12
5	22030	SCREW, MACH. FLAT HD. 1/4-20 UNC X 1	4
6	51110	GUIDE BLOCK, 5/8 X 1 X 1 5/8	1
7	57665	GUIDE ROD, 5/8 RD. X 9 1/8	1
8	20052	HEX. HD. BOLT, 1/4-20 UNC 1 3/4	4
9	57653	HINGE FRAME ASS'Y	1
10	20197	SOCKET HD. SLD. BOLT, 5/16-18 UNC X 3/8	3
11	22940	STOP COLLAR, 5/8 1D	1
12	20204	SOCKET HD. SLD. BOLT, 5/16-18 UNC X 1 1/4	1
13	57656	LINKAGE BAR, 1/4 X 5/8 X 5 1/8	2
14	22110	SET SCREW, 1/4-20 UNC X 1/4	2
15	57657	LOCK ROD, 5/16 RD X 16 3/4	1
16	57754	THD, SLEEVE, 1/2-13 UNC (RH)	1
17	22660	ROLL PIN, 1/8 DIA. X 5/8	2
18	57662	TENSION DONUT, (RH)	1
19	57655	CENTER BLOCK	1
20	57663	TENSION DONUT (LH)	1
21	57755	THD, SLEEVE, 1/2-13 UNC (LH)	1
22	57895	ADJUSTMENT HAND LEVER	2
23	30793	COMPRESSION SPRING, 11/16 ID X 15/16 OD	1
24	30845	COMPRESSION SPRING, 3/4ID X 1 7/32 OD	1
25	57654	FRONT SUPPORT BLOCK	1
26	20197	SOCKET HD. BOLT, 5/16-18 UNC X 3/8	1
27	30296	PRESSURE CYLINDER	1

# CHEST ASSEMBLY SPRING BREAKAWAY (608105)



ITEM	PART NO.	DESCRIPTION	QTY
1	41020	CHEST CUSHION	1
2	51110	GUIDE BLOCK 1/2 X 1 X 1 5/8	1
3	20052	HEX. BOLT, 1/4-20UNC X 1 3/4	4
4	57653	HINGE FRAME ASS'Y	1
5	20197	BOLT, SOCKET HEAD, 5/16-18 SHLD. 3/8 X 3/8	5
6	57657	LOCK ROD 5/16RD X 16 3/4	1
7	22110	LOCK HANDLE	2
8	22110	SET SCREW, 1/4-20 X 1/4	2
9	57754	THREAD SLEEVE, (RH) 1/2-13 UNC X 1 1/8	1
10	57755	THREAD SLEEVE, (LH) 1/2-13 UNC X 1 1/8	1
11	57662	LOCK DONUT, (RH) 1/2-13 UNC	1
12	57663	LOCK DONUT, (LH) 1/2-13 UNC	1
13	57656	LINKAGE BAR, 1/4 X 5/8 X 5 1/8	2
14	22940	STOP COLLAR	1
15	57655	CENTER LOCK BLOCK	1
16	30296	PRESSURE CYLINDER #50	1
17	57654	FRONT SUPPORT BLOCK	1
18	22660	ROLL PIN, 1/8 X 3/16	2
19	30845	COMPRESSION SPRING 3/4 ID X 1 7/32 OD	1
20	30793	COMPRESSION SPRING 11/16 ID X 15/16 OD	1
21	30296	PRESSURE CYLINDER	1
22	57665	GUID ROD, 5/8 RD X 9 1/8	1

# ELEVATION BASE FRAME ASS'Y



ITEM	PART NO.	DESCRIPTION	QTY.
1	54270	BASE FRAME ASS'Y	1
2	54339	TIE BAR	1
3	54145	CONNECTION PIN, 1/2 RD X 4 1/8	2
4	22888	BUSHING CAP	6
5	54155	ROCKER ARM (FRONT)	1
6	54303	ROCKER ARM (BACK)	1
7	20510	HEX HD BOLT, 1/2-20UNF X 1 1/4	4
8	24414	END CAP	2
9	56241	LINKAGE ARM ASS'Y	1
10	22886	BRASS BUSHING, 1/2 ID X 5/8 OD X 1	4
11	21910	FLAT WASHER, 1/2 ID X 1 OD	4
12	22230	SET SCREW, 5/16-18 UNC X 1/4	3
13	56255	HEX. HD. BOLT, 1/2-20 UNF X 2 1/4	4
14	21210	HEX NUT, 3/8-16UNC	4
15	20373	ELEVATOR BOLT, 3/8-16UNC 1 1/2	4
16	22679	CYLINDER PIN, 1/2 RD X 3 1/2	1
17	22640	COTTER PIN, 3/32 X 1.00	2
18	20912	WASHER, FLAT, PLASTIC, .516 ID X 1 1/2 OD	6
19	22110	SET SCREW, 1/4-20 UNC X 1/4	4
20	22250	SET SCREW, 5/16-24 UNF X 1/2	1

# LLOYD TABLE COMPANY

## PRODUCTS & ACCESSORIES



# LLOYD



# TABLE COMPANY



102-122 W. Main Street • Lisbon, Iowa 52253-0899 • Phone 319-455-2110  
Call Toll Free 1-800-553-7297 FAX: 319-455-2166

[www.lloydtable.com](http://www.lloydtable.com)