

# **LLOYD TABLE COMPANY**

## **ASTRO STATIONARY & ELEVATION**

### **OPERATIONS & PARTS MANUAL**



*ASTRO Elevation (with drops)*



*ASTRO Stationary (with drops)*

**Lloyd Table Company**  
**102 W. Main Street \* Lisbon, IA 52253**  
**Phone 319-455-2110 Fax 319-455-2166**  
**Website [www.lloydtable.com](http://www.lloydtable.com)**  
**Email [sales@lloydtable.com](mailto:sales@lloydtable.com)**  
**Call Toll Free 1-800-553-7297**

**LLOYD**  
TABLE COMPANY

# CONTENTS

<u>OPERATIONS</u>	<u>PAGE</u>	<u>PARTS / ASSEMBLY</u>	<u>PAGE</u>
Safety and Maintenance.....	1 - 2	Stationary Frame.....	14-15
Head Rest Cushion.....	3 - 6	Elevation Frame (A-B STYLE TOP).....	16-17
Chest Cushion.....	7-8	I-Frame Assembly .....	18-19
Pelvic Cushion.....	9	Tilt Head Cushions.....	20
Ankle Cushion.....	10	Deluxe Head Cushions .....	21
Foot Pedal Control.....	10	Deluxe Cushions Hand Drop (Elev.).....	22-23
Astro Stationary Kick Drop.....	11	Deluxe Chest Cushion Hand Drop.....	24-25
Electronic Height Adjustment (EHA).....	12-13	Deluxe Chest Cushion Kick Drop.....	26-27
		Deluxe Pelvic Cushion Kick Drop.....	28-29
		Adjustable Height Ankle Rest.....	30
		Hydraulics Assembly.....	31
		Electrical.....	32
		Electrical - EHA & Auto Drops.....	33
		Straight Drop Head.....	34-35
		Forward Motion Drop Head.....	36-37

Table Serial Number \_\_\_\_\_

# WELCOME!!

Lloyd Table Company, a proud supporter of today's chiropractors, has established the finest line of chiropractic tables in the world. Table products unique in versatility and function, designed to meet your needs.



## SAFETY

Concerned for a safe working and treatment environment, Lloyd Table Company asks that you follow the safety tips below.

- \* Be aware of Caution and Warning labels posted throughout the table before operating any functions.
  
- \* Everyone operating the table needs to read the manual and familiarize themselves with all its functions before operating the table with patient on it.
  
- \* A patient should never be unattended, when lying on the table. NEVER LEAVE A PATIENT ON THE TABLE UNATTENDED!
  
- \* The patient should be positioned at or near the center of the table with arms on the armrest cushions.
  
- \* There should be no more than one operator at the controls.
  
- \* Check the tension on all drops before adjusting the patient. (See Page 7)



## MAINTENANCE

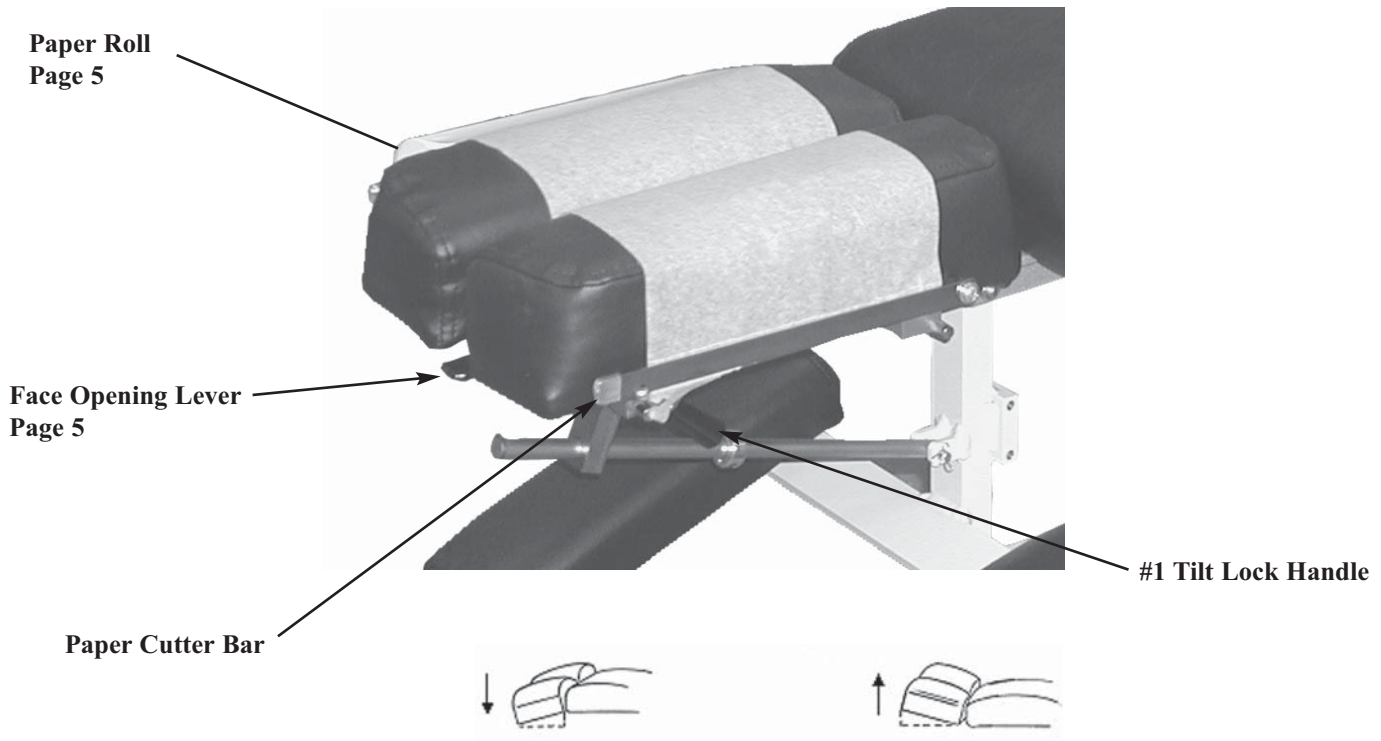
The following steps should be performed on a regular basis to maintain your Lloyd table in a smooth operating condition and to assure its long life and top quality appearance.

- \* An initial inspection and periodic future inspections should be made to insure that nuts and bolts have not loosened in shipping or during daily operations.
  
- \* Your Lloyd table should be lubricated every six months. Parts to be lubricated are all pivot points, and metal to metal sliding mechanisms.  
(DO NOT LUBRICATE FRICTION LOCKS)
  
- \* The cushions should be cleaned daily with a mild soap & warm water solution to remove body oils.  
Rinsed & dried
  
- \* Chrome parts should be cleaned on a weekly basis for appearance.
  
- \* The hydraulic fluid recommended for the pump, is a lubriplate HO1 hydraulic oil, and
  
- \* Perform periodic inspections for oil leaks or drips.

The following sections provide explanations on the operation of your Lloyd table. All references to right and left, will be in relationship to your view, as you face table from the foot end. All references to the front will refer to the head end of the table. Those to the rear will refer to the foot end.

## Head Cushion

The Head Cushion is designed to provide a multitude of positions & operations through our Add On Paper (AOP), Deluxe Headpiece and optional Drop Headpieces.



Tilting Head Adjustment

### **To raise the tilting headpiece:**

1. Lift on the bottom front edges of the cushion.
2. Release when desired height is obtained, the cushion will automatically lock into position.

### **To lower the tilting headpiece:**

1. Support the corner edge of the cushion.
2. Lift the Locking Handle (#1) to release.
3. Gently lower the cushion to the desired height.
4. Release the Lock Handle (#1) and then the cushion to lock.

# Deluxe Headpiece



## **To Raise the tilting feature on the Deluxe Headpiece:**

1. Lift on the bottom front edges of the cushion
2. Release at the desired height, the cushion will automatically lock into position.



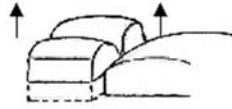
## **To Lower the tilting feature on the Deluxe Headpiece:**

1. Support the front corner edge of the cushion.
2. Lift the Locking Handle (No. 1) to release.
3. Gently lower the cushion to the desired height.
4. Release the lock handle first and then the cushion to lock.



**WARNING: TO AVOID INJURIES WHEN RAISING OR LOWERING HEAD CUSHIONS, BE SURE TO HAVE A PROPER HOLD ON THE CUSHION BEFORE RELEASING THE ELEVATING HANDLE (NO. 2).**

# Deluxe Headpiece



## **To Elevate the Head Cushion**

1. The head cushion is assisted by a gas shock in raising the cushion. With a hand supporting the head cushion, turn the Elevation Knob (No. 2) on either side of the table upward to unlock. When the desired height is determined simply release the Elevation Knob (No. 2) to lock.

## **To Lower the Head Cushion**

1. Turn the Elevation Knob upward to unlock. While unlocked push down on the cushion to lower. When the desired height is determined simply rotate the Elevation Knob (No. 2) down to lock.

## **Face Opening Adjustment**

1. The Head Cushion's face opening can be opened or closed to adjust for comfort with the Face Opening Lever (No. 3). By Pushing slightly down on the Face Opening Lever, slide cushions to adjust opening. The Face Opening Lever must be released in one of eight positions to lock the cushions in place.

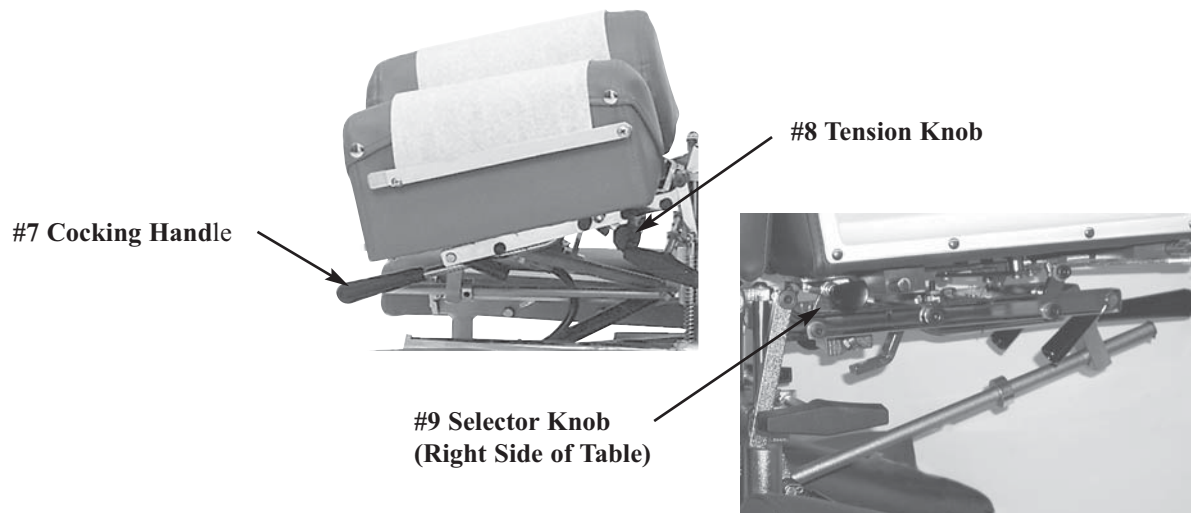
## **Paper Roll**

The paper roll mounts conveniently inside the right-hand cushion.

## **Replacing the Paper Roll**

1. Remove the paper hanger tension rod (No. 4) by compressing ends of the rod horizontally. This will allow you to slide one end out, to remove the paper roll tube.
2. Slide a new paper roll on the tension rod so that it rolls off the bottom side. Compress the rod ends horizontally and set inside the head cushion.
3. Swing the Center Bar (No. 5, Page 4) and Outside Cutting Bar (No. 6, Page 4) up. Route paper over the cushions and down between the two outside cutting bars. Return both bars to their original position.
4. Trim the paper by supporting the paper cutting bar with one hand and pulling the paper up along the bar's edge.

# Deluxe Head Straight & Forward Motion Drops



## Operating the Straight / Toggle Drop:



**CAUTION: THE DROP CUSHION TENSION SHOULD BE CHECKED AND TESTED BEFORE ADJUSTING A PATIENT.**

**NOTE - DROP SHOULD BE IN DOWN / DEACTIVATED POSITION BEFORE MOVING SELECTOR KNOB (NO. 9) IN OR OUT.**

1. To engage the Straight / Toggle Drop head, pull the selector knob (No. 9) out about half an inch.
2. Push down on the Cocking Handle (No. 7) until the head cushion toggle drop is activated .
3. Once cocked, test the drop by pushing down on the cushion. If the cushion drops easily or too hard, adjust the tension with the Tension Knob (No. 8).

## Operating The Tension Knob:

1. The tension is adjusted by turning the tension knob (No. 8) in a clockwise and counterclock-wise direction.
  - A. Clockwise - Increases Tension
  - B. Counterclockwise - Decreases Tension

## Operating the Forward Motion Drop:



**CAUTION: THE DROP CUSHION TENSION SHOULD BE CHECKED AND TESTED BEFORE ADJUSTING A PATIENT.**

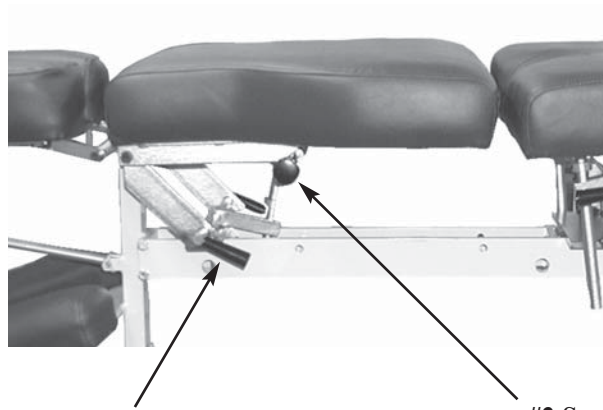
**NOTE - DROP SHOULD BE IN DOWN / DEACTIVATED POSITION BEFORE MOVING SELECTOR KNOB (NO. 9) IN OR OUT.**

1. The Selector Knob (No. 9) is to be pushed in, to engage the forward motion drop.
2. Push down on the Cocking Handle (No. 7) until the head cushion forward motion drop is activated.
3. Once cocked, test the drop by pushing down on the cushion, and adjust the tension.



# Chest Cushion

The chest cushion is designed to accommodate patients with large or small abdomens and has the versatility of being a stationary or floating cushion.



**#1 Adjustable Chest Handle**

**#2 Spring Breakaway Knob**

## Standard - Adjustable Tilting Chest

### Height Adjustment of Chest Cushion

1. Lift the rear corners of the cushion.
2. Release the cushion when the desired angle is reached and the cushion will automatically lock into place.

### Tilting Chest Cushion Down

1. Support the cushion at the rear corners.
2. Lift on the Adjustable Chest Handle (No. 1) to release the cushion.
3. Slide the cushion to desired angle.
4. Release the Adjustable Chest Handle (No. 1) first and then the cushion to lock into desired height.

## Optional Spring Breakaway Chest

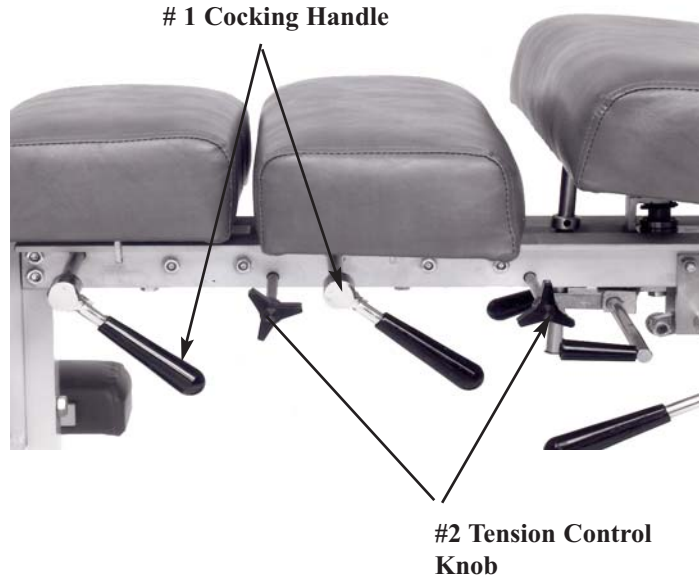
### To Engage Spring Breakaway Chest Cushion

1. Pull on Spring Breakaway Knob (No. 2) (facing the right side of the table) to unlock.
2. The resulting floating effect will allow the cushion to gently drop under pressure and spring back when released.

### To Lock the Spring Breakaway Cushion

1. Gently pull up on chest cushion to full horizontal position, then Push on Spring Breakaway Knob (No. 2) (facing the right side of the table) to lock.

# Chest Cushion Manual Drops



## Chest & Lumbar Drop - Manual

### Cocking the Drop Chest or Lumbar Cushion

1. Pull up on the Cocking Handle (No. 1) to cock the desired drop cushion.
2. Adjust the tension on the drops, by turning the Tension Control Knob (No. 2).

**Right side:** Clockwise - Decreases Tension

Counterclockwise - Increase Tension

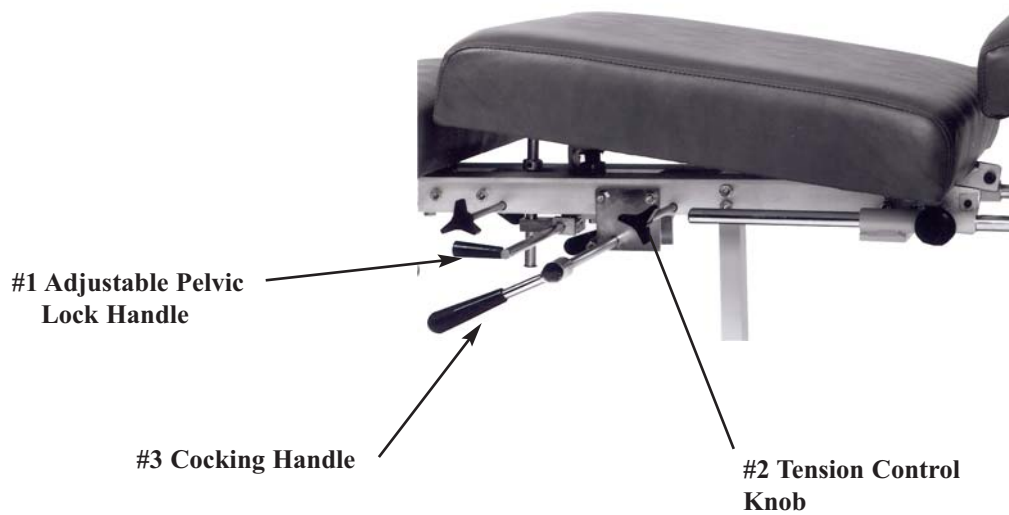
**Left Side:** Clockwise - Increase Tension

Counterclockwise - Decrease Tension

**CAUTION: THE DROP CUSHION TENSION SHOULD BE CHECKED AND TESTED BEFORE ADJUSTING PATIENT. KEEP FINGERS AWAY FROM BOTTOM OF CUSHION TO AVOID PINCHING**



# Pelvic Cushion



## Pelvic Height Adjustment

Raising - Lift the cushion by its front corners to the desired height. The Cushion will lock in place once released.

Lowering - Support the cushion by slightly lifting up on a front corner. Next, lift the Adjustable Pelvic Lock Handle (No. 1) up and allow the cushion to slide down to desired height. Once adjusted to a desired height, release the lock handle and then the cushion to secure the height position.

## Lumbar / Pelvic Drop - Manual

### Cocking the Drop Lumbar / Pelvic Cushion

1. Pull up on the Cocking Handle (No. 3) to cock the cushion.
2. Adjust the tension on the drojps, by turning the Tension Control Knob (No. 2)

**Right side:** Clockwise - Decreases Tension      Counterclockwise - Increase Tension  
**Left Side:** Clockwise - Increase Tension      Counterclockwise - Decrease Tension



**CAUTION: THE DROP CUSHION TENSION SHOULD BE CHECKED AND TESTED BEFORE ADJUSTING PATIENT. KEEP FINGERS AWAY FROM BOTTOM OF CUSHION TO AVOID PINCHING**

# Ankle Rest



#1 Horizontal Lock Knob



#2 Vertical Lock Lever

Support Pin

## Ankle Rest Horizontal Adjustment

### To Extend or Retract the Ankle Rest

1. Loosen the Horizontal Lock Knob (No. 1) and slide the cushion to the desired length.
2. Once the cushion is adjusted, tighten the lock knob.

## Optional Vertical Ankle Rest

### To Raise the Ankle Rest

1. Simply lift on the sides of the Ankle Rest Cushion.
2. Once the desired height is obtained the cushion will automatically lock into position when released.

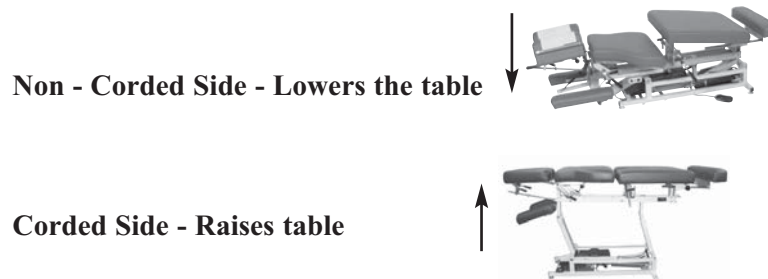
### To Lower the Ankle Rest

1. From the back end of the table, support the center of the Ankle Rest Cushion with the right hand.
2. With left hand, slide the Vertical Lock Lever (No. 2) towards the left side to release lock.
3. Lower the cushion to desired height, and release the Vertical Lock Lever to lock into place.

# Foot Pedal Control

## Directional Pedal

The directional pedals have the dual function of horizontally raising and lowering the table in elevation. The directional pedals can be operated in manual and auto mode as described on page 13 ( auto / manual).



# Kick Drop Table Astro Stationary



**CAUTION: THE DROP CUSHION TENSION SHOULD BE CHECKED AND TESTED BEFORE ADJUSTING PATIENT. KEEP FINGERS AWAY FROM BOTTOM OF CUSHION TO AVOID PINCHING.**

## Cocking Foot Lever:

1. Cocking any of the drop cushions, is done with the selective Foot Lever. Placing your foot on the pedal and pushing in toward the table until it stops, will cock the drop cushion. Once the cushion is activated, check the tension before adjusting patient.
2. Adjust the tension on the drops, by turning the Tension Control Knob (No. 2)

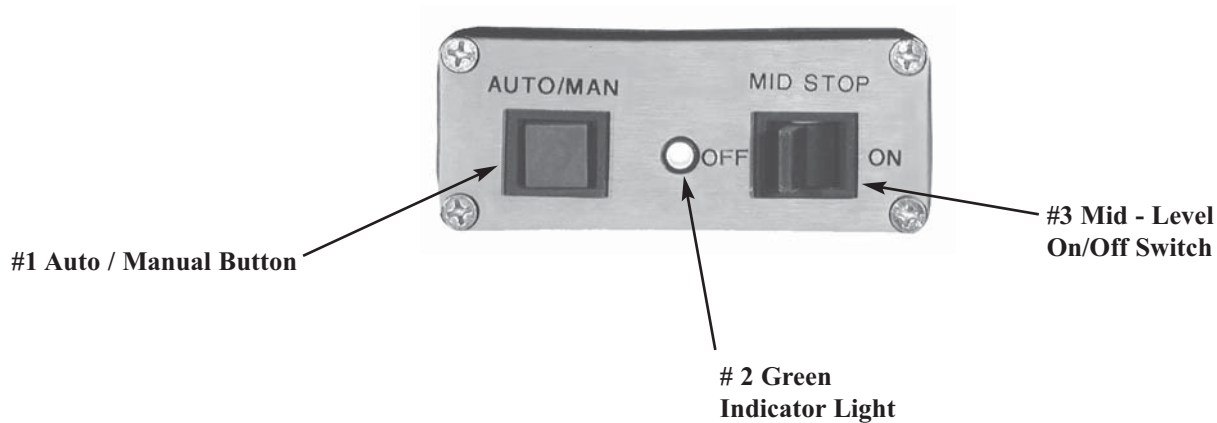
**Right side:** Clockwise - Decreases Tension

Counterclockwise - Increase Tension

**Left Side:** Clockwise - Increase Tension

Counterclockwise - Decrease Tension

# Optional - Electronic Height Adjustment (EHA)



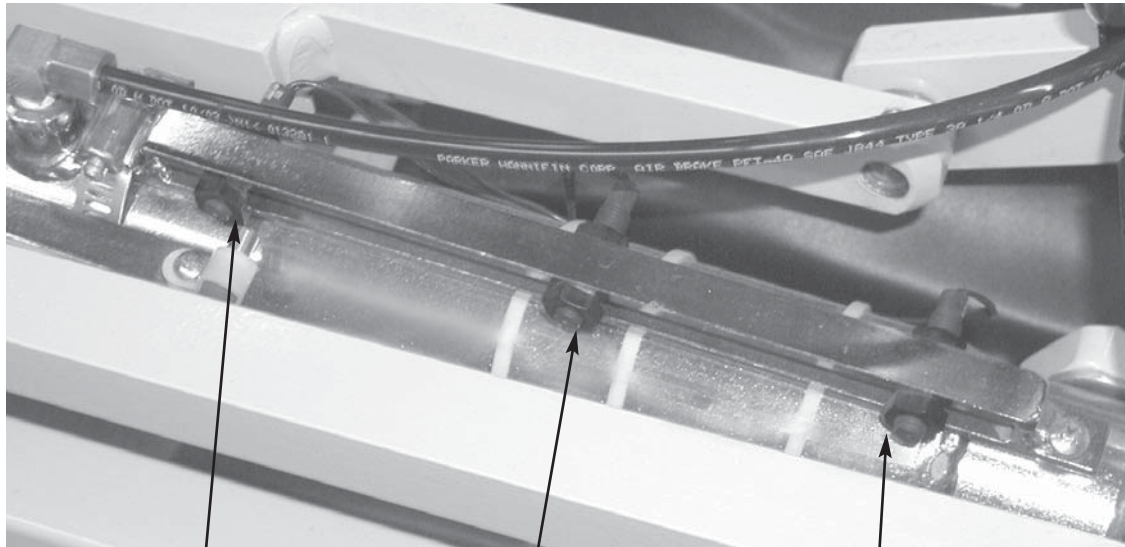
## **To Activate Electronic Height Adjustment:**

1. Push the Auto / Manual Button(No. 1) Button to activate EHA. Once the Auto / Manual Button (No. 1) has been pressed note that the Green Indicator Light (No. 2) is now illuminated.
2. Toggle the Mid - Level On/Off Switch(No. 3). Toggle the switch toward the foot end of the table to activate the Mid-Level Stop. (If the Mid-Level Switch is “on” the table will stop at the programmed middle setting)  
  
Toggle the switch towards the head end of the table to turn off the Mid-Level Stop.  
(If the Mid-Level Switch is “off” the table will elevate or lower without stopping at the programmed middle setting)
3. Depress foot pedal once until the programmed height is achieved.

## **To Turn “Off” Electronic Height Adjustment**

1. Push the Auto / Manual Button(No. 1) Button to activate EHA. Once the Auto / Manual Button (No. 1) has been pressed note that the Green Indicator Light (No. 2) is now off.
2. When the EHA is off the table is in manual mode, press the foot pedal until desired height is obtained and release pedal.

# Electronic Height Adjustment (EHA)



#1 Upper Level Adjustment

#2 Mid-Level Adjustment

#3 Lower Level Adjustment

## To Set Programmed Heights for EHA:

### To Set Upper Level:

1. Loosen Nut on the Upper Level Adjustment (No. 1) and slide towards the head end of table to increase height.



**CAUTION: BE CAREFUL NOT TO SET TOO FAR FORWARD AS THIS CAN CAUSE MOTOR TO KEEP RUNNING.**

Slide towards the foot end of the table to decrease height. Once height is obtained simply tighten nut to set level.

### To Set Mid-Level:

1. Loosen Nut on the Mid-Level Adjustment (No. 2) and slide towards the head end of table to increase height. Slide towards the foot end of the table to decrease height. Once height is obtained simply tighten nut to set level.

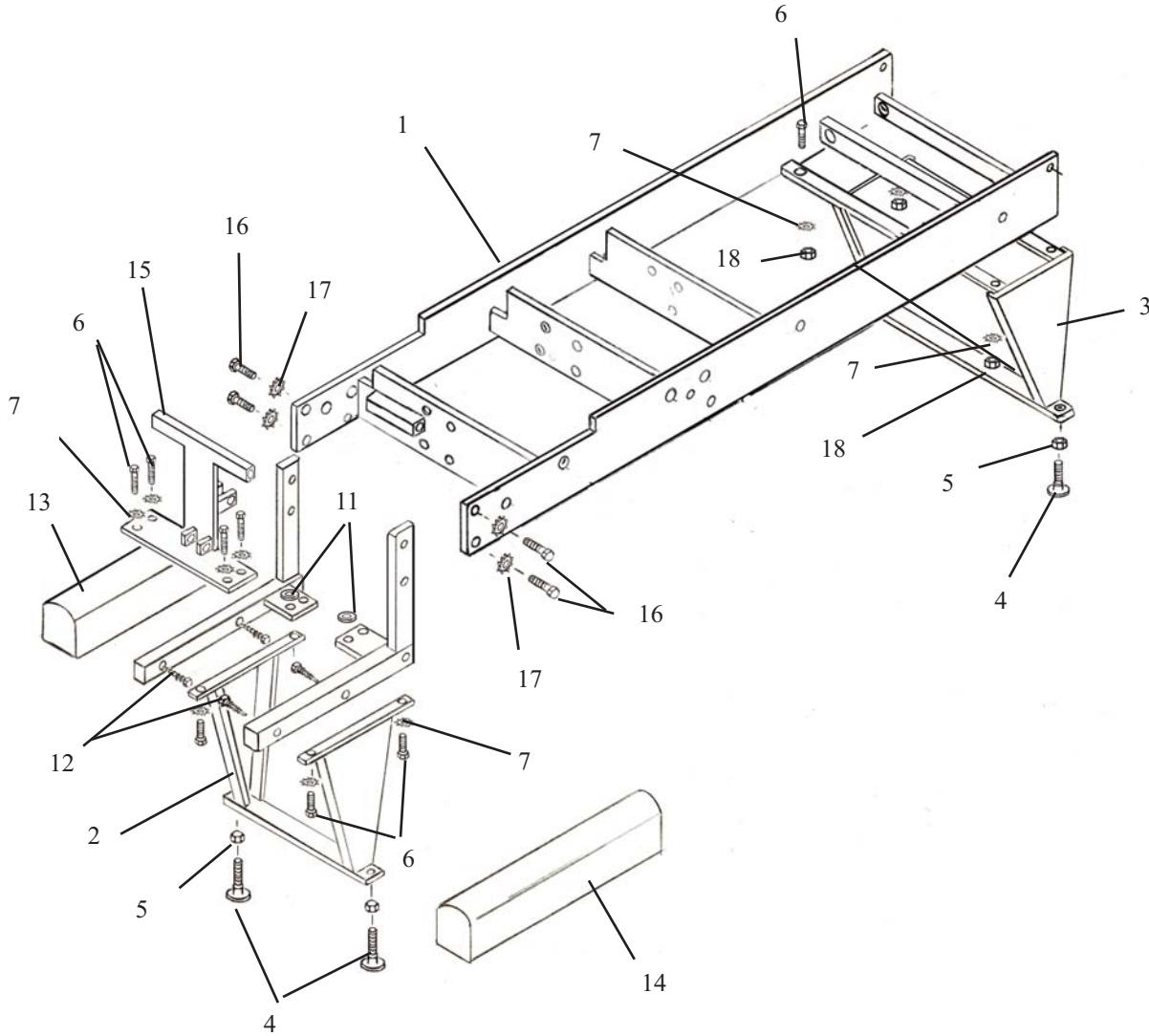
### To Set Lower-Level:

1. Loosen Nut on the Lower-Level Adjustment (No. 3) and slide towards the head end of table to increase height. Slide towards the foot end of the table to decrease height. Once height is obtained simply tighten nut to set level.

# PARTS / ASSEMBLY



# ASTRO STATIONARY FRAME



# ASTRO STATIONARY FRAME

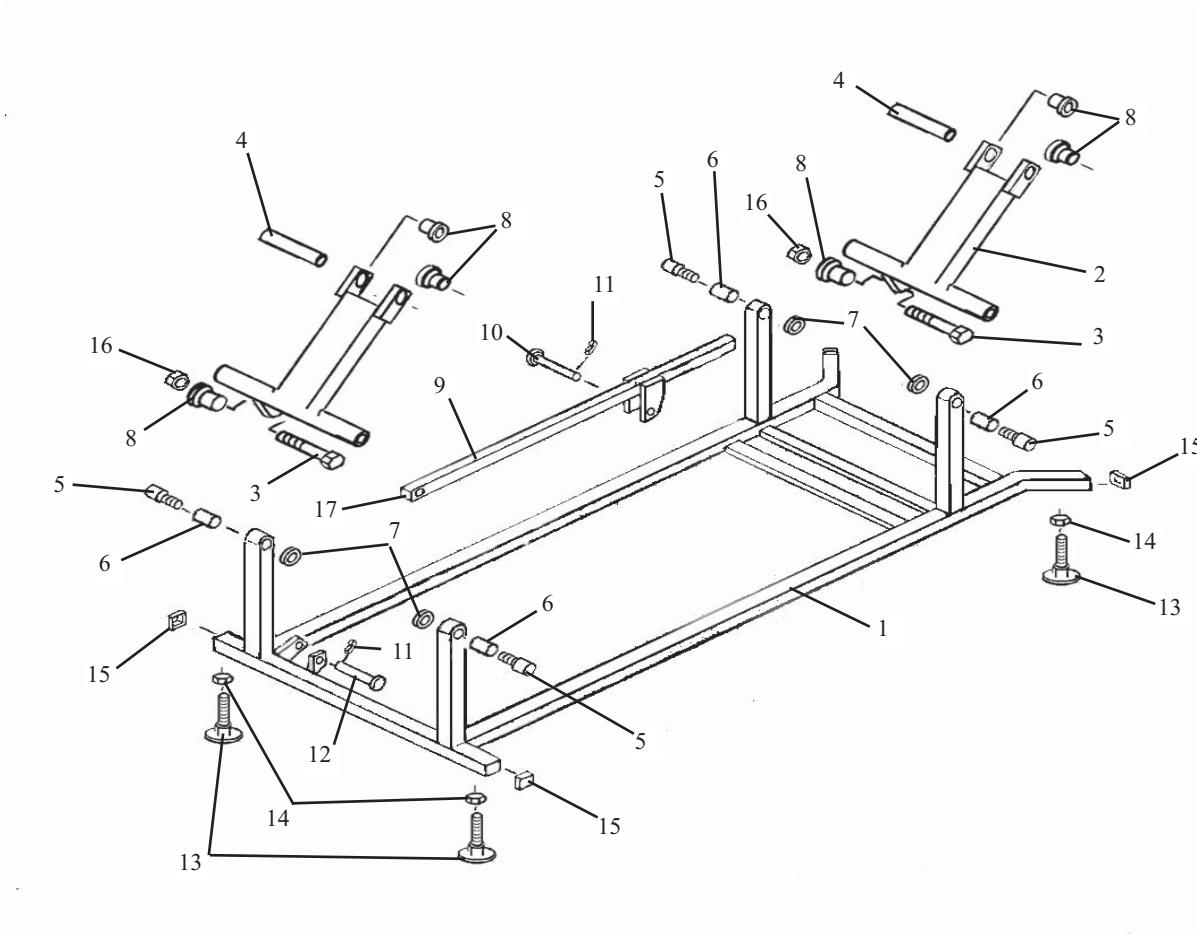
ITEM	PART NO.	DESCRIPTION	QTY.
1	55206	ASTRO KD FRAME ASS'Y	1
2	table below	FRONT LEG - SEE TABLE BELOW	1
3	table below	BACK LEG - SEE TABLE BELOW	1
4	20373	ELEVATOR BOLT, 3/8 -16 UNC X 1 ½	4
5	21210	HEX. NUT, 3/8 – 16 UNC	8
6	20112	HEX. BOLT, ¼-28 UNF X 5/8	12
7	21630	STAR WASHER 1/4 ID X 1/2 OD	12
8	55153	L-FRAME ASS'Y (LH)	1
9	55154	L-FRAME ASS'Y (RH)	1
10	22510	FLAT HD. SCREW, #9 X 1 ½	2
11	24283	SCHIM, 5/8ID	2
12	22085	LAG SCREW, ¼ X 3.00	6
13	40010	ARM REST (RH)	1
14	40030	ARM REST (LH)	1
15	55554	I-FRAME ASS'Y	1
16	20320	HEX HD. BOLT, 3/8-16 UNC X 3/4	8
17	21820	STAR WASHER 3/8 ID	8
18	21010	HEX NUT, 1/4-20 UNC	8

## LEG HEIGHT

Table Ht.	Front	Rear
18"	57690	57706
19"-20"	57691	57697
21"-22"	57692	57698
23"- 24"	57693	57699
25"-26"	57695	57701
27"-28"	57696	57702

# ASTRO ELEVATION BASE FRAME ASSEMBLY

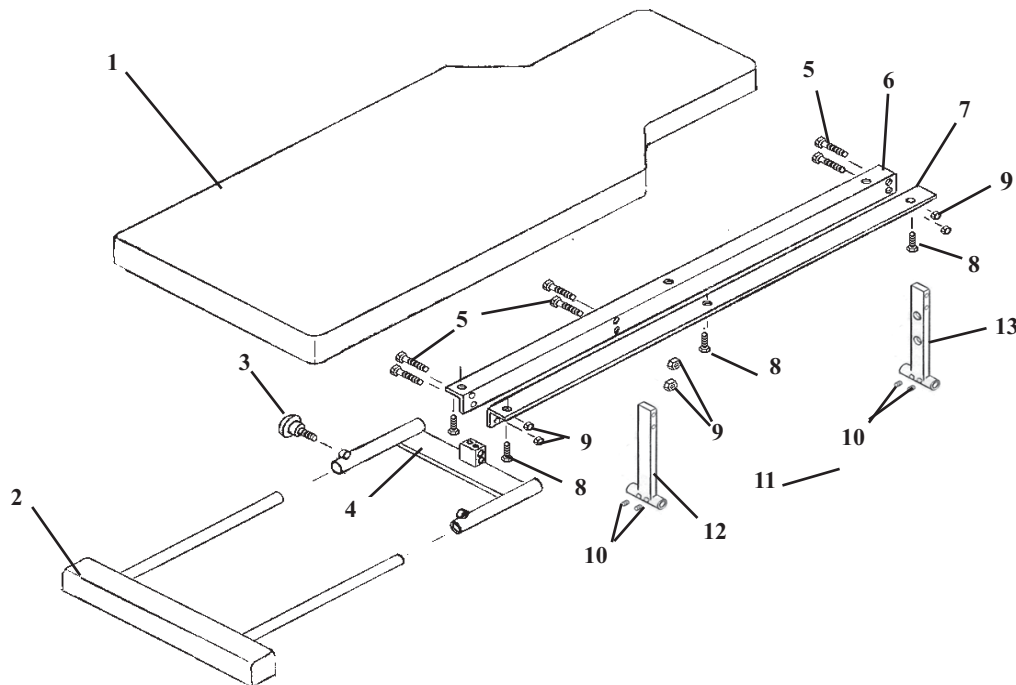
600700



ITEM	PART NO.	DESCRIPTION	QTY.
1	54153	BASE FRAME ASS'Y	1
2	54155	DRIVER ARM ASS'Y	2
3	20542	HEX HD. BOLT, 1/2-20 UNC x 2 1/4 (chrome)	2
4	54145	CONNECTOR PIN, 1/2 RD x 4 1/8	2
5	30609	AXLE STUD, .871 DIX 1.625	4
6	22900	BRASS BUSHING, 7/8 ID x 1 1/4	4
7	21912	WASHER PLASTIC, 5/16 ID x 1 1/4 OD	4
8	22888	BRASS BUSHING, 1/2 ID x 5/8 OD	6
9	54173	DRIVER ARM	1
10	22677	CONNECTING PIN, 1/2 RD. x 2 5/8	1
11	22640	COTTER PIN, 3/32 x 1.00	2
12	22679	CYLINDER PIN, 1/2 RD x 3 1/2	1
13	20372	ELEVATOR BOLT, 3/8-16 UNC x 1 1/2	4
14	21210	HEX NUT, 3/8-16 UNC	4
15	24414	CAP, 1 1/4 x 1 1/4	4
16	21320	HEX NUT, 1/2-20UNC	2
17	24411	CAP, 1x1	4

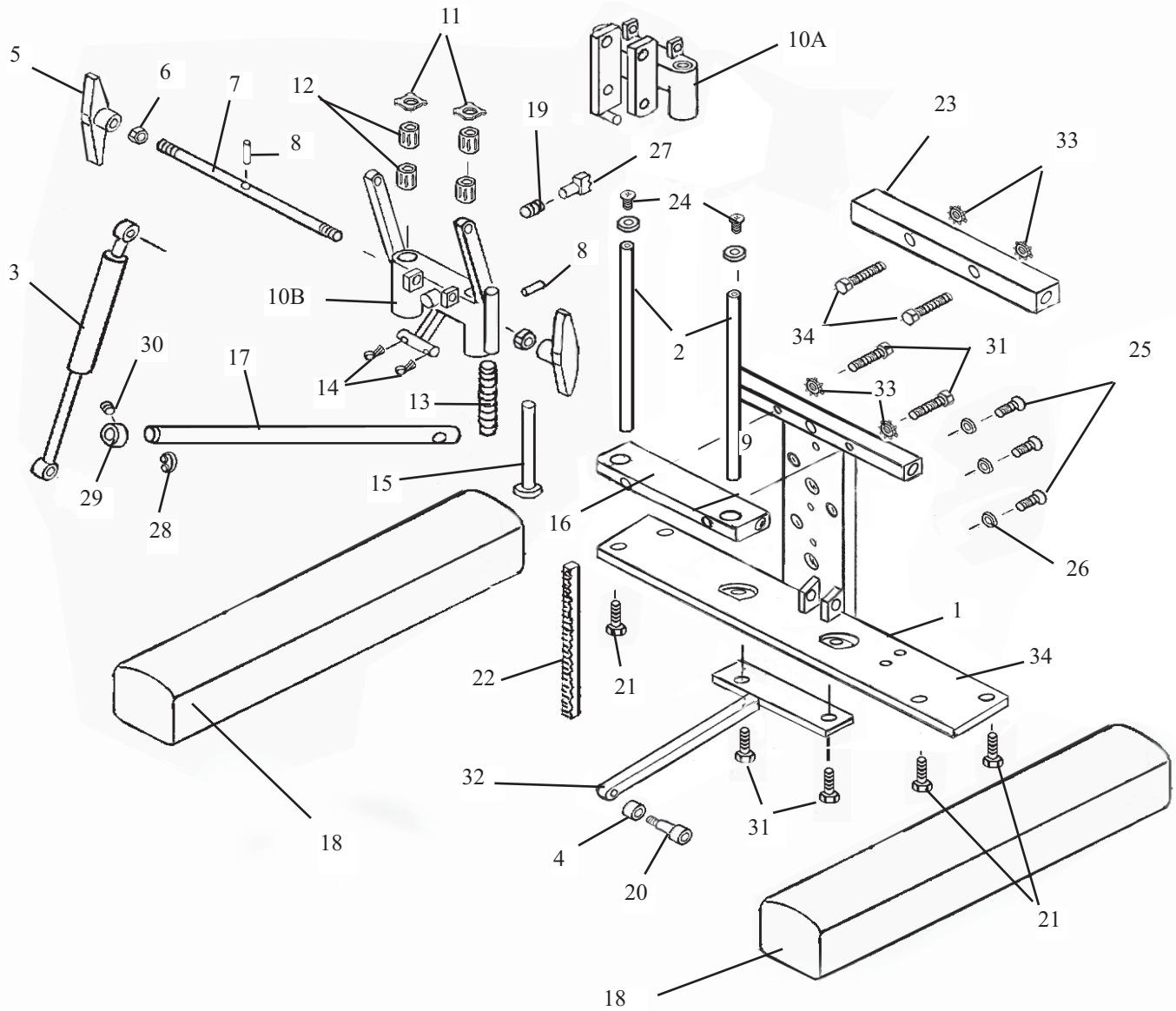
# ASTRO ELEVATION TOP FRAME ASS'Y

600700



ITEM	PART NO.	DESCRIPTION	QTY.
1	40552	A-B TYPE CUSHION	1
2	610110	ANKLE REST ASS'Y	1
3	24181	LOCK KNOB	1
4	54179	ANKLE YOKE ASS'Y	1
5	20363	HEX HD BOLT, 3/8-16UNC X 2 1/4	6
6	54174	SIDE RAIL, (LH)	1
7	54175	SIDE RAIL, (RH)	1
8	20024	HEX HD BOLT, 1/4-20UNC X 1 1/4	6
9	21211	JAM NUT, 3/8-16UNC	6
10	22230	SET SCREW, 5/16-18UNC X 1/4	3
11	20052	HEX HD BOLT, 1/4-20UNC X 1 3/4	4
12	54177	ROCKER ARM (BACK)	1
13	54198	ROCKER ARM,(FRONT)	1

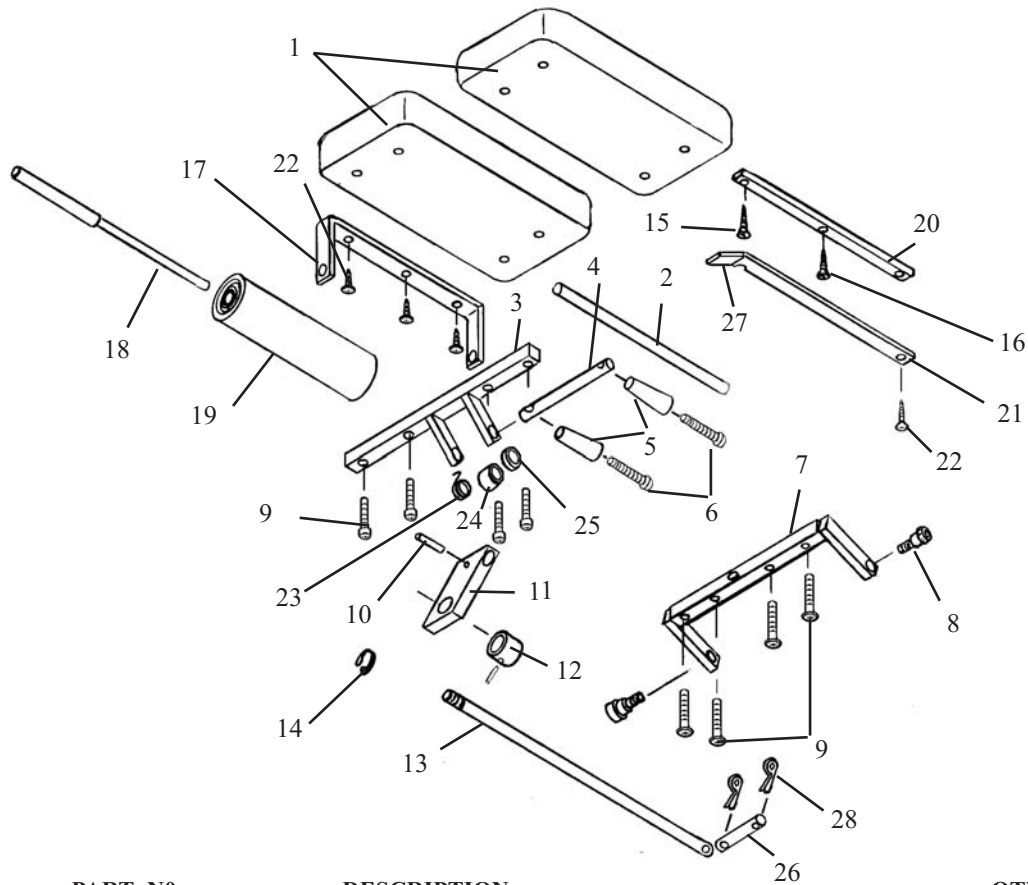
# I - FRAME ASSEMBLY DELUXE, & FORWARD MOTION



# I - FRAME ASSEMBLY DELUXE, & FORWARD MOTION

ITEM	PART NO.	DESCRIPTION	QTY.
1	54193	I-FRAME ASSEMBLY	1
2	50872	GUIDE ROD, 1/2 RD. X 7 7/8	2
3A	30296	CYLINDER, PRESSURE, F/M 89 HD, 50#	1
3B	30297	CYLINDER, PRESSURE, DELUXE HD, 40#	1
4	56006	SPACER, 3/8 ID X 1/2 OD	2
5	24186	TENSION KNOB	2
6	21210	HEX NUT, 3/8-16 NC	2
7	55949	ADJUSTMENT ROD, 3/8 RD X 11	1
8	22675	ROLL PIN, 1/8 X 3/4	2
9	21620	FLAT WASHER, 1/4 ID X 9/16 OD	2
10A	55750	SHUTTLE ASSEMBLY, FLEXION HEAD	1
10B	56045	SHUTTLE ASSEMBLY, F/M & DELUXE HD.	1
11	24050	SPRING CLIP	4
12	22891	BUSHING, 1/2 ID X 1 OD	4
13	30740	COMPRESSION SPRING 5/16 IDX 4 3/4	1
14	22640	COTTER PIN, 3/32 X 1	2
15	55959	PLUNGER ASS'Y	1
16	56415	CAP PLATE	1
17	54108	ROD, TILT LOCK, 7/16 RD. X 16 1/4	1
18	40839	ARM REST CUSHION	2
19	30750	COMPRESSION SPRING, 9/32 ID X 3/4	1
20	20003	SOCKET HD. SHD BOLT, 1/4-20 UNC X 1	1
21	20052	HEX. HD. BOLT, 1/4-20 UNC X 1 3/4	4
22	56019	GEAR RACK	1
23	56393	EXTENSION PLATE	2
24	22013	BUTTON HD. MACHINE SCREW, 1/4-20 UNC X 1/2	2
25	21975	PAN HD. MACHINE SCREW, #6-32NC X 1/2	3
26	21510	FLAT WASHER, 3/16 ID X 1/2 OD	3
27A	56064	LOCK PIN ASSEMBLY, F/M & DELUXE HD,	1
27B	56007	LOCK PIN ASSEMBLY, FLEXION HD.	1
28	24285	SNAP RING 1/2"	1
29	22913	SET COLLAR, 1/2"	1
30	22110	SET SCREW, 1/4-20 UNC X 1/4	1
31	20022	HEX. HD. BOLT, 1/4-20 UNC X 1	4
32	54243	EXTENSION TONGUE ASS'Y	1
33	21630	STAR WASHER 1/4TD	4
34	20054	HEX. HD. BOLT, 1/4-20UNC X 2	2

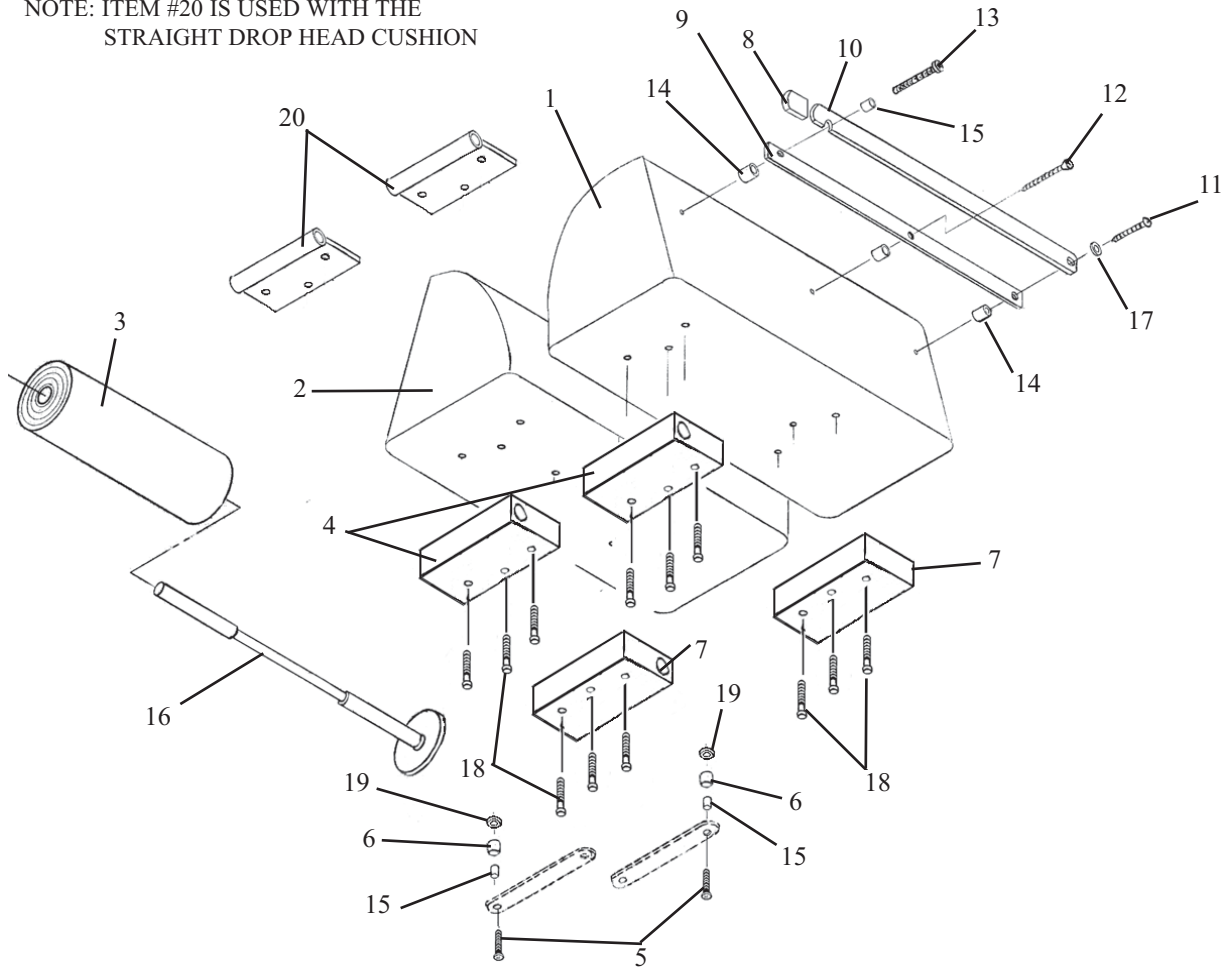
# TILT HEAD CUSHION ASS'Y



ITEM	PART NO.	DESCRIPTION	QTY.
1	40654	HEAD CUSHION	2
2	57936	CENTER ROD	1
3	56381	FRONT BRACE	1
4	56152	ADJUSTMENT ROD	1
5	24020	HANDLE	1
6	22050	RD. HEAD SCREW, 1/4-20 UNC X 2 1/2	2
7	56396	BACK BRACE	1
8	20003	SOCKET HD. BOLT, 1/4-20 UNC X 1/2	2
9	20023	Bol, Hex HD, 1/4-20 X 1 1/4	8
10	22675	ROLL PIN	1
11	54107	ADJUSTING BLOCK	1
12	22913	COLLAR	1
13	54142	EYE ROD, TILT, 1/2 X 15 13/16	1
14	22508	FLAT HD. SCREW, #10 X 7/8	1
15	22455	RD. HD. SCREW, #8 X 3/4	4
16	24285	E-CLIP	1
17	56305	PAPER HANGER	1
18	57956	HANGER ROD ASS'Y	1
19	29999	PAPER ROLL	1
20	57934	INSIDE BAR	1
21	57933	OUTSIDE CUTTING BAR	1
22	22468	SHEET METAL SCREW, #10 X 7/8	1
23	30870	TORSION SPRING	1
24	22912	COLLAR, 3/8 ID	1
25	21912	PLASTIC WASHER, 1/2 ID X 1 1/4 OD	1
26	24235	PIN, 5/16 X2	1
27	24235	PLASTIC GUARD	1
28	22640	COTTER PIN	2

# DELUXE HEAD CUSHION ASS'Y

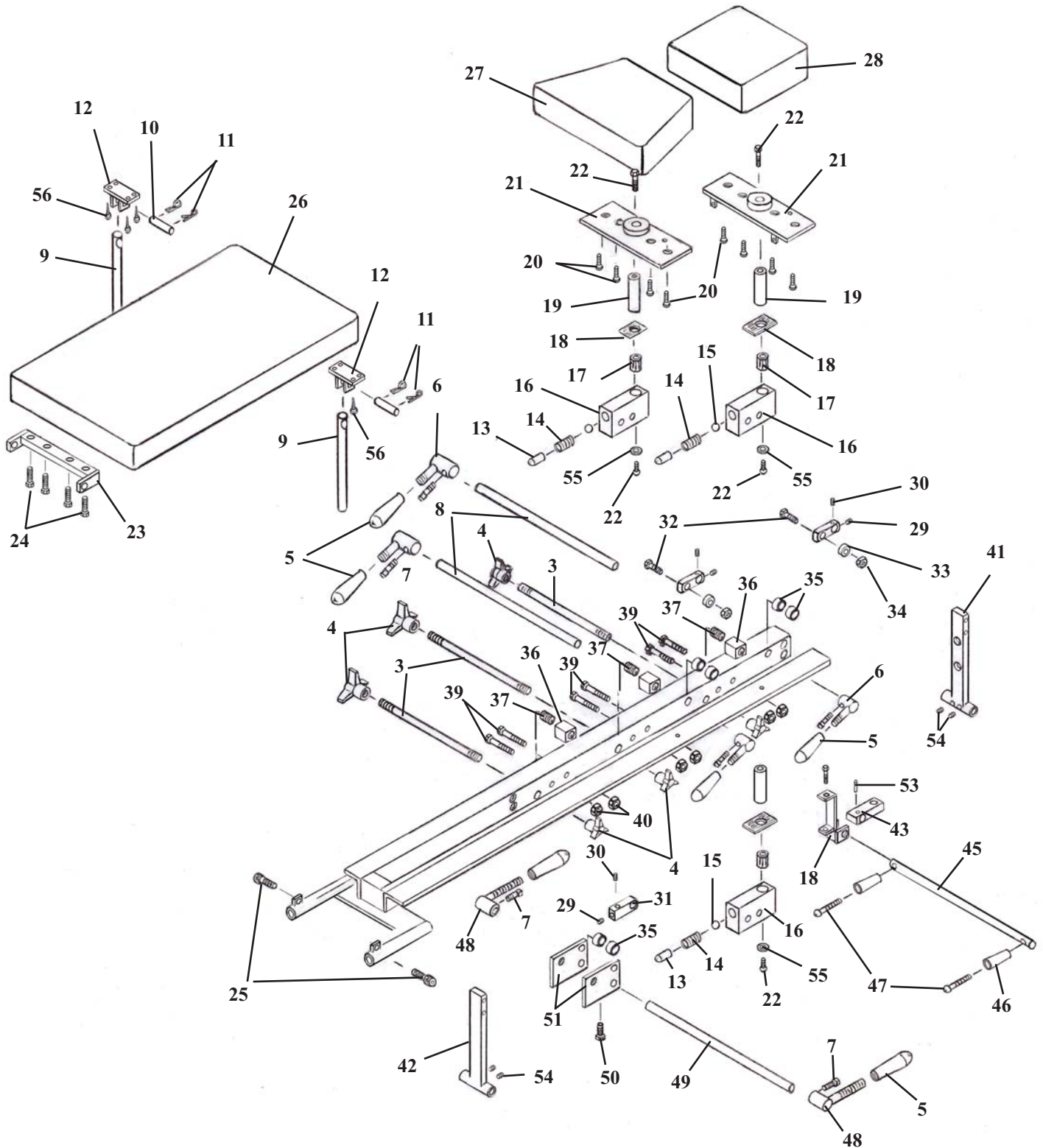
NOTE: ITEM #20 IS USED WITH THE STRAIGHT DROP HEAD CUSHION



ITEM	PART NO.	DESCRIPTION	QTY
1	40110	CUSHION, HEAD - LEFT HAND	1
2	40130	CUSHION, HEAD - RIGHT HAND	1
3	29999	HEADREST PAPER	1
4	30400	SLIDE BLOCK, FRONT	2
5	22009	OVAL HD. MACHINE SCREW, #10-24 NC X 1 1/2	2
6	57174	SPACER, 3/16 ID X 1/2 OD X 5/8	2
7	30401	SLIDE BLOCK, REAR	2
8	24235	GUARD, CUTTING BAR	2
9	50750	INSIDE CUTTING BAR	1
10	50770	OUTSIDE CUTTING BAR	1
11	22550	RD. HD. WOOD SCREW #14 X 2.00	1
12	22510	FLAT HD. WOOD SCREW, #9 X 1 1/2	1
13	22522	RD. HD. WOOD SCREW, #9 X 2.00	1
14	50720	SPACER, PAPER CUTTER, 3/8 ID X 1/2 OD	3
15	22860	BUSHING, 3/16 ID x 1/4 OD	3
16	50778	PAPER HANGER ASS'Y, w/ Washer	1
17	21610	FLAT WASHER, 3/16 ID X 1/2 OD	1
18	22003	OVAL HD. MACHINE SCREW, #10 - 24 NC X 3/4	12
19	21510	FLAT WASHER, 3/16 ID X 1/2 OD	2
20	57155	GUIDE TUBE ASS'Y, FRONT	2

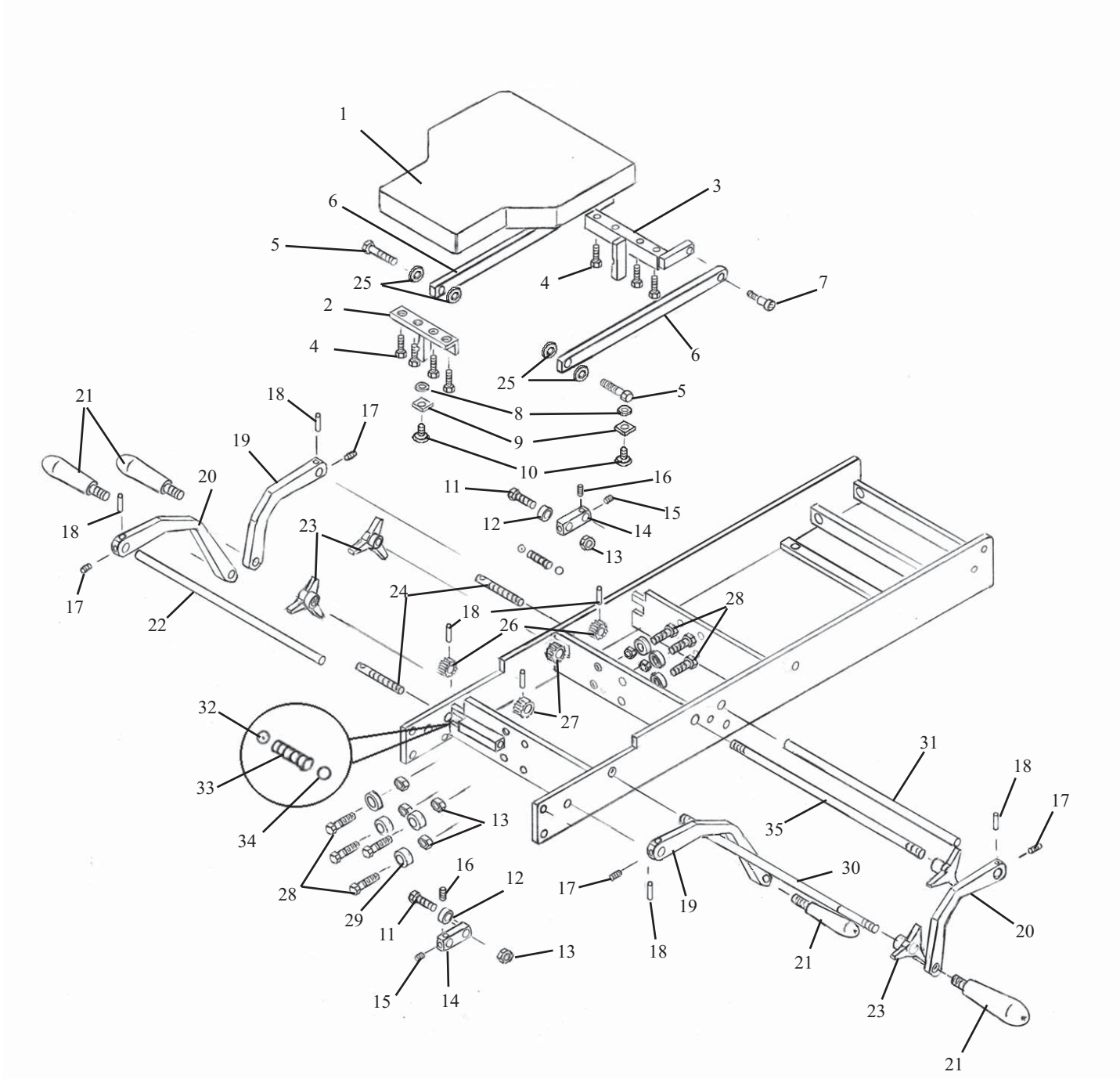


# ASTRO ELEVATION DROP CUSHIONS



ITEM	PART NO.	DESCRIPTION	QTY.
1	54187	SIDE RAIL, (RH)	1
2	54188	SIDE RAIL, (LH)	1
3	54199	TENSION ROD, 3/8 RD. X 12 7/8	3
4	24180	TENSION KNOB	6
5	24010	COCKING HANDLE	6
6	42312	COCKING HANDLE ASSEMBLY	4
7	22235	BOLT, SQ. HD. 5/16-18 UNC X 3/4	6
8	55135	COCKING ROD, 1/2" RD. X 14 3/8	2
9	57735	EYE-ROD, PELVIC, 9/16 RD. X 7 13/16	1
10	54146	SUPPORT PIN, 5/16 RD. X 1 1/8	1
11	22640	COTTER PIN 1/8"	2
12	56959	BRACKET PLATE, PELVIC	2
13	54176	BULLET, DROP BLOCK, 1/2" RD. X 1 1/16	3
14	30830	COMPRESSION SPRING, 1/4" ID X 1/2 OD X 2	3
15	22710	BALL BEARING, 1/2" DIA.	3
16	54200	DROP BLOCK,	3
17	22845	BEARING	3
18	40730	PAD	3
19	30426	PISTON	3
20	22030	SCREW, MACHINE, FLAT HD. 1/4-20 UNC X 1.00	8
21	57330	PLATE, CUSHION	2
22	20321	BOLT, HEX. HD. 3/8-24 UNC 3/4	2
23	57730	HINGE BRACKET ASS'Y	1
24	20023	BOLT, HEX. HD. 1/4-20 UNC X 1 1/4	4
25	20199	BOLT, SHLD. SOCKET HD. 5/16-18 UNC 1/2	2
26	40335	PELVIC CUSHION	1
27	40530	LUMBAR CUSHION	1
28	40510	CHEST CUSHION	1
29	22250	SET SCREW, 5/16 - 24 UNF X 1/2	3
30	22260	SET SCREW, 5/16 - 24 UNF X 1/4	3
31	52730	COCKING ARM	3
32	20332	BOLT, HEX. HD. 3/8-16 UNC X 1	3
33	22805	ROLLER BEARING	3
34	21210	HEX. NUT, 5/16-24 UNF	3
35	55139	COLLAR	6
36	54178	TENSION BLOCK	3
37	54170	WORM SCREW	3
38	20258	BOLT, HEX. HD. 5/16-18 UNC X 2 1/2	4
39	20260	BOLT, HEX. HD. 5/16-18 UNC X 3	2
40	21112	HEX. NUT, 5/16-18 UNC	6
41	54198	LINKAGE ARM ASS'Y (FRONT)	1
42	54177	LINKAGE ARM ASS'Y, (BACK)	1
43	57737	ADJUSTMENT BLOCK	1
44	54182	YOKE BRACKET ASS'Y	1
45	57739	ADJUSTMENT ROD	1
46	24020	ADJUSTMENT HANDLE	2
47	22050	SCREW, MACHINE, RD. HD. 1/4-20 UNUC X 2 1/2	2
48	57909	COCKING HANDLE ASS'Y, (LONG)	2
49	55136	LOCK RELEASE ROD, 1/2" RD. X 20	1
50	20024	BOLT, SOCKET HD. 1/4-20 UNC X 1 1/4	1
51	54186	SUPPORT PLATE	2
52	21710	FLAT WAHER, 5/16 ID X 11/16 OD	3
53	22660	ROLL PIN, 1/8" DIA. X 5/8	1
54	22230	SET SCREW, 5/16- 18 UNC X 1/4	4
55	21860	FLAT WASHER, 7/16 ID X 1.00 OD	3
56	22503	SCREW, FLAT HD. #8 X 3/4	8

# FULL CHEST TEE-DROP HAND DROP

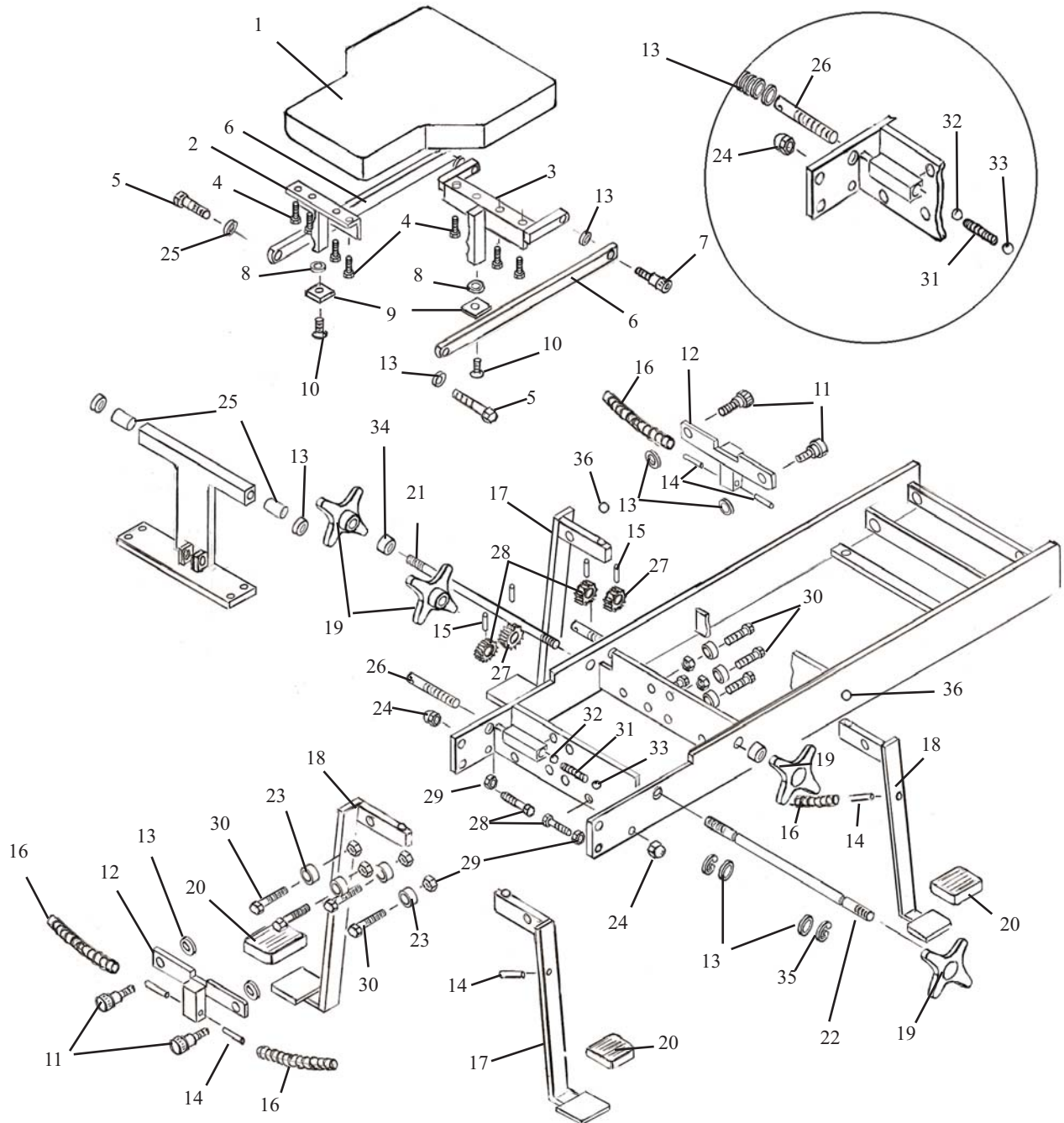


# FULL CHEST TEE-DROP

## HAND DROP

ITEM	PART NO.	DESCRIPTION	QTY.
1	40235	CHEST CUSHION ASS'Y	1
2	57433	FRONT TEE WEDGE ASS'Y	1
3	57429	REAR TEE WEDGE ASS'Y	1
4	20022	HEX HD BOLT, ¼-20UNC X 1.00	8
5	20350	HEX HD BOLT, 3/8-16UNC X 1 ¼	2
6	57435	SIDE RAIL	2
7	20197	SOCKET HD. BOLT, 5/16-18UNC X 1	2
8	21810	WASHER, FLAT, 3/8 ID X 13/16 OD	2
9	55367	SPACER	2
10	22370	FLAT HD OCKET SCREW, 3/8-24UNF X ¾	2
11	20332	HEX HD BOLT, 3/8-16UNC X 1	2
12	22812	ROLLER BEARING	2
13	21210	HEX. NUT, 3/8-16UNC	10
14	52730	COCKING ARM	2
15	22250	SET SCREW, 5/16-24UNF X ½	2
16	22260	SET SCREW, 5/16-24UNF X ¼	2
17	22160	SET SCREW, ¼-28UNF X ¼	4
18	22670	ROLL PIN, 1/8 X ¾	8
19	57449	COCKING HANDLE (RH)	2
20	57472	COCKING HANDLE (LH)	2
21	24012	COCKING HANDLE	4
22	55368	CONTROL KNOB ½ RD. X 12	1
23	24180	CONTROL KNOB	4
24	55364	TENSION SCREW	2
25	21800	FLAT WASHER , (PLASTIC) 3/8 ID X ½ OD	4
26	30311	GEAR, PLASTIC, 3/8 ID X 15/16 OD	2
27	30312	GEAR, PLASTIC, 3/8 ID X 1 1/8 OD	2
28	20330	HEX. HD. BOLT, 3/8-16 UNC X 7/8	8
29	22810	ROLLER BEARING, 3/8 ID	8
30	57392	TENSION ROD, 3/8 RD. X 13 9/16	1
31	57444	COCKING ROD ½ RD. X 13	1
32	22700	BEARING BALL 3/8"	1
33	30830	TENSION SPRING	1
34	22710	BEARING BALL ½"	1
35	55138	TENSION ROD, 3/8 X 14 9/16	1

# FULL CHEST T-DROP Kick Drop



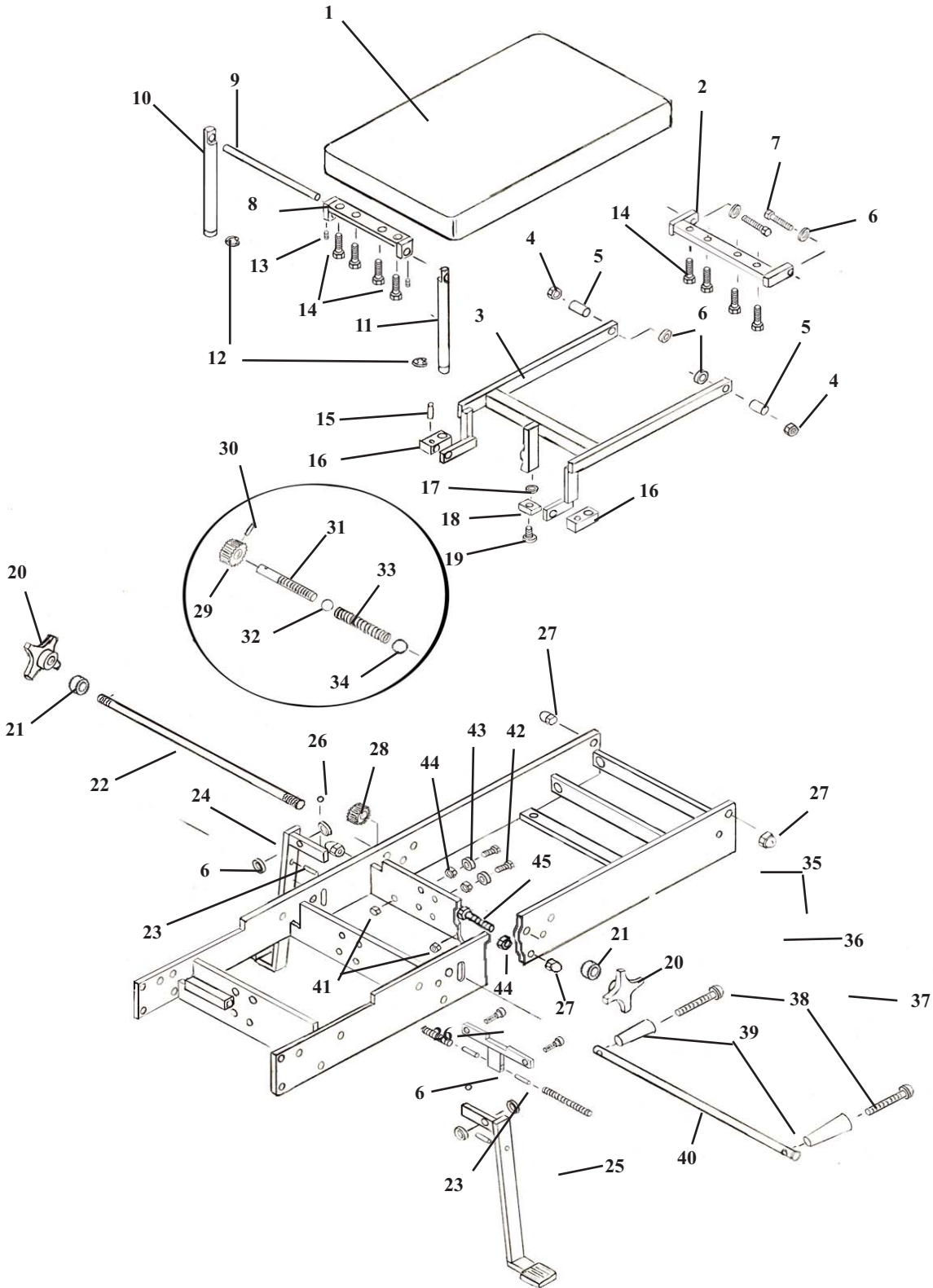
# FULL CHEST T-DROP

## KICK DROP

ITEM	PART NO.	DESCRIPTION	QTY.
1	40235	CHEST CUSHION ASS'Y	1
2	57433	FRONT TEE WEDGE ASS'Y	1
3	55365	REAR TEE WEDGE ASS'Y	1
4	20022	HEX HD BOLT, 1/4-20UNC X 1.00	8
5	20350	HEX HD BOLT, 3/8-16UNC X 1 1/4	2
6	57435	SIDE RAIL	2
7	20197	SOCKET HD. BOLT, 5/16-18UNC X 1	2
8	21810	WASHER, FLAT, 3/8 ID X 13/16 OD	2
9	55367	END CAP	2
10	22370	MACHINE SCREW FLAT HD. 3/8-24UNC X 3/4	2
11	20204	SOCKET HD SHOULDER BOLT, 5/16-18UNC X 3/4	4
12	55360	T-HANGER ASS'Y	2
13	21800	FLAT PLASTIC WASHER	18
14	22680	ROLL PIN 3/16 X 5/8	4
15	22670	ROLL PIN, 1/8 X 3/4	4
16	30748	COMPRESSION SPRING 3 5/8	4
17	58478	FOOT PEDAL (22" TABLE)	2
18	58477	FOOT PEDAL (22" TABLE)	2
19	24154	CONTROL KNOB	2
20	24245	FOOT PAD	4
21	55138	TENSION CONTROL ROD, 3/8 X 14 9/16	1
22	57392	TENSION CONTROL ROD, 3/8 X 13 9/16	1
23	22810	BALL BEARING	8
24	21213	CAP NUT, 3/8-16UNC	2
25	55933	EXTENSION BUSHING, 3/8ID X 5/8OD	2
26	55364	TENSION SCREW	2
27	30311	GEAR, PLASTIC, 3/8 ID X 15/16 OD	2
28	30312	GEAR, PLASTIC, 3/8 ID X 1 1/8 OD	2
29	21210	HEX. NUT, 3/8-16	8
30	20330	HEX. HD. BOLT, 3/8-16UNC X 7/8	1
31	30830	TENSION SPRING	1
32	22700	BEARING BALL 3/8"	1
33	22710	BEARING BALL 1/2"	1
34	22912	COLLAR 3/8 ID	2
35	24290	C-CLIP	2
36	22705	ROLLER BALL	2



# PELVIC T-DROP ASSEMBLY KICK DROP

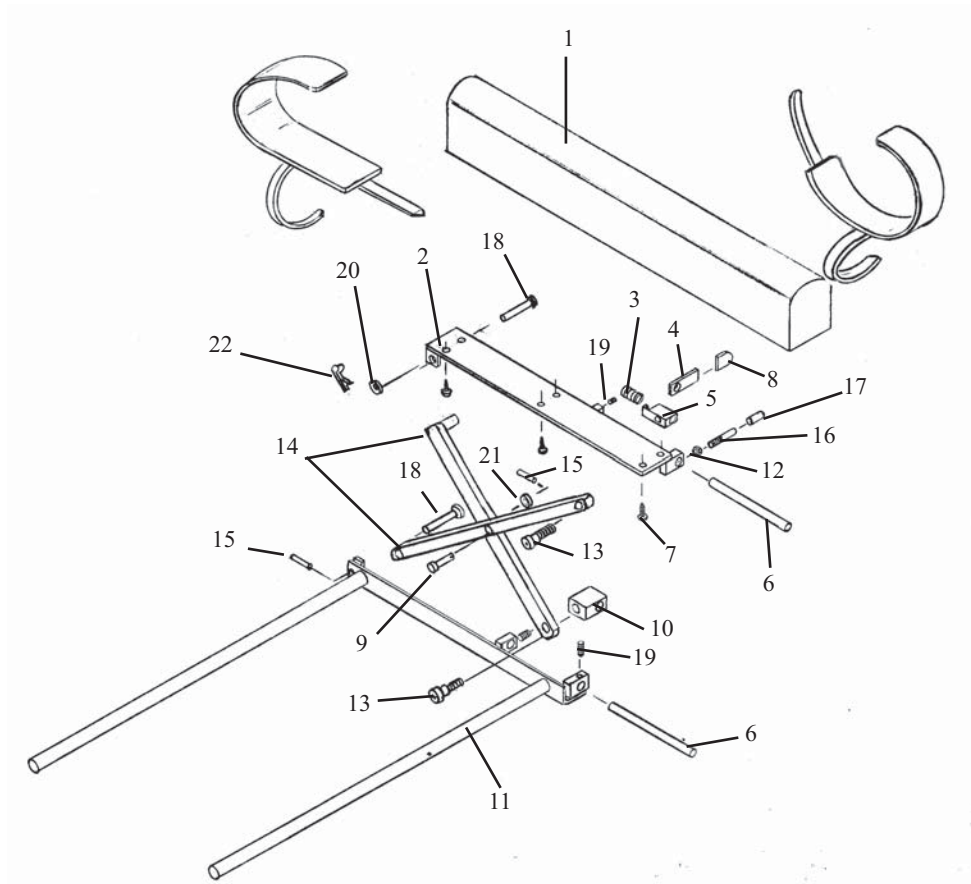


# PELVIC T-DROP ASSEMBLY KICK DROP

ITEM	PART NO.	DESCRIPTION	QTY.
1	40334	PELVIC CUSHION	1
2	55362	REAR HINGE BRACKET	1
3	55202	T-DROP FRAME	1
4	21211	JAM NUT 3/8-16 UNC	1
5	57719	SPACER 1/2 OD X .350	1
6	21850	WASHER PLASTIC, 3/8 ID X 1.00 OD	4
7	20365	BOLT, HEX. HEAD 3/8-16 UNC X 2	2
8	57740	FRONT BRACKET ASS'Y	1
9	57745	SUPPORT ROD 3/8 RD X 10 7/8	1
10	57735	EYE-ROD (plain)	1
11	57738	EYE-ROD, (groove)	1
12	24286	C-CLIP	1
13	22090	SET SCREW, #10-32 UNC X 3/16	2
14	20023	HEX. HD. BOLT, 1/2-20 UNC X 1 1/4	8
15	22660	ROLL PIN 1/8 X 5/8	2
16	57737	ADJUSTMENT BLOCK	2
17	21810	FLAT WASHER 3/8 ID	1
18	55367	END CAP	1
19	22370	FLAT HD. SCREW, 3/8-16 X 3/4	1
20	24180	TENSION KNOB	2
21	22912	COLLAR 3/8 ID	2
22	57447	TENSION ADJ. ROD, 3/8 DIA. X 17 1/2	1
23	22685	ROLL PIN, 3/8	4
24	58478	FOOT PEDAL (RH)	1
25	58477	FOOT PEDAL (LH)	1
26	22705	BEARING BALL 5/16	1
27	21213	CAP NUT, 3/8-16UNC	4
28	30310	ADJUSTMENT GEAR 3/8ID X 1 1/2OD	1
29	30312	TENSION GEAR 3/8ID X 1 1/8OD	1
30	22670	ROLL PIN 1/8 X 3/4	2
31	55364	TENSION SCREW	1
32	22700	STEEL BALL 3/8 DIA.	1
33	30830	COMPRESSION SPRING, 1/4 ID X 1 1/2 OD X 2	1
34	22710	STEEL BALL 1/2 DIA.	1
35	20204	SOCKET HD. SHLD.BOLT, 5/16-18UNC X 3/4	2
36	55361	HANGER BRACKET	1
37	30748	RETURN SPRING	2
38	22050	ROUND HD. SCREW, 1/4-20UNC X 2 1/2	2
39	24020	HANDLE	2
40	57739	ADJUSTMENT ROD 1/2 RD. X 17	1
41	21110	JAM NUT, 5/16 -18UNC	2
42	20330	HEX HD. BOLT, 3/8-16UNC X 7/8	4
43	22810	BALL BEARING, 3/8ID	4
44	21210	HEX NUT, 3/8-16UNC	6
45	20365	HEX.BOLT, 3/8-16UNC X 2	2

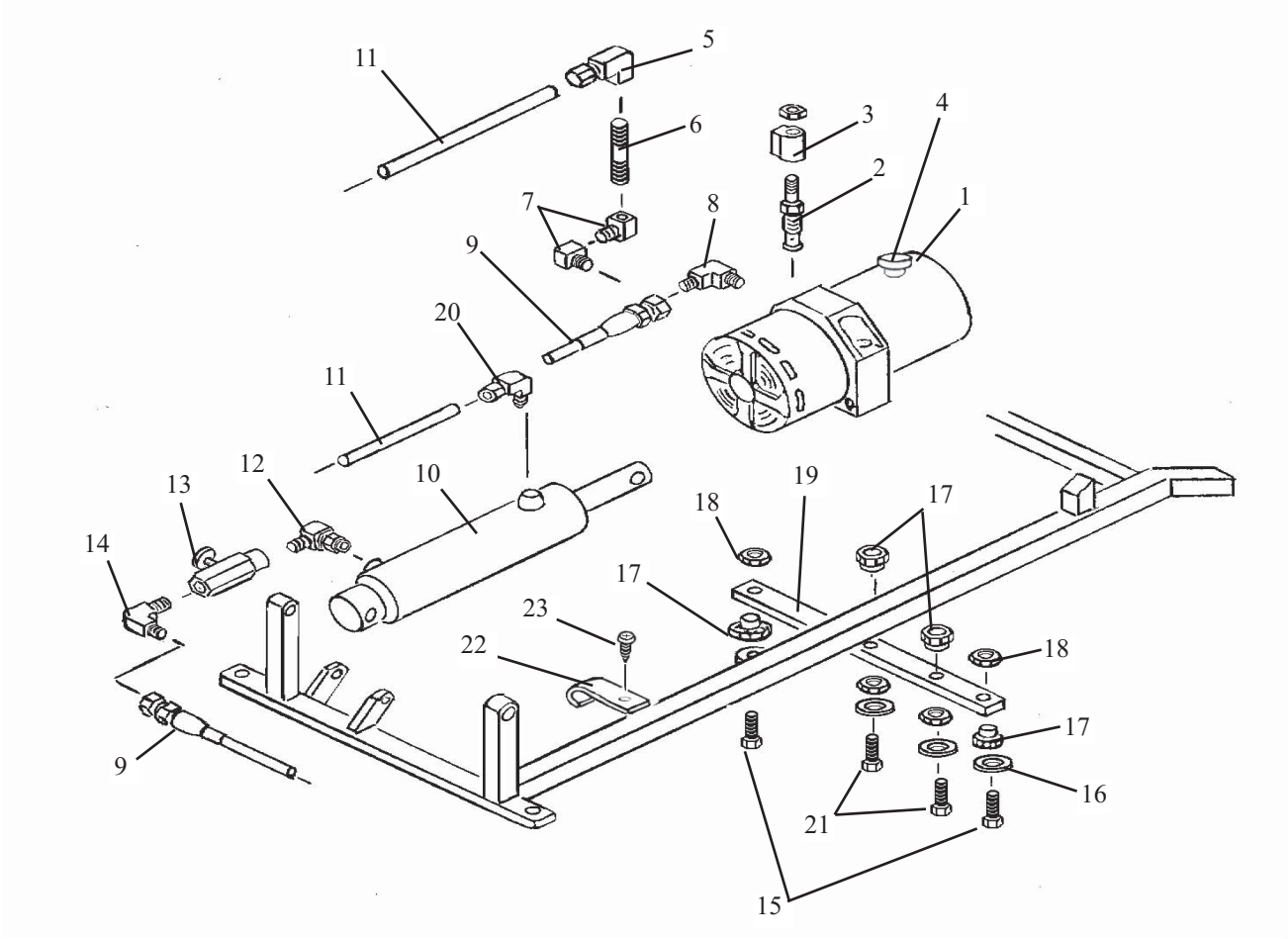


# ANKLE REST ASSEMBLY



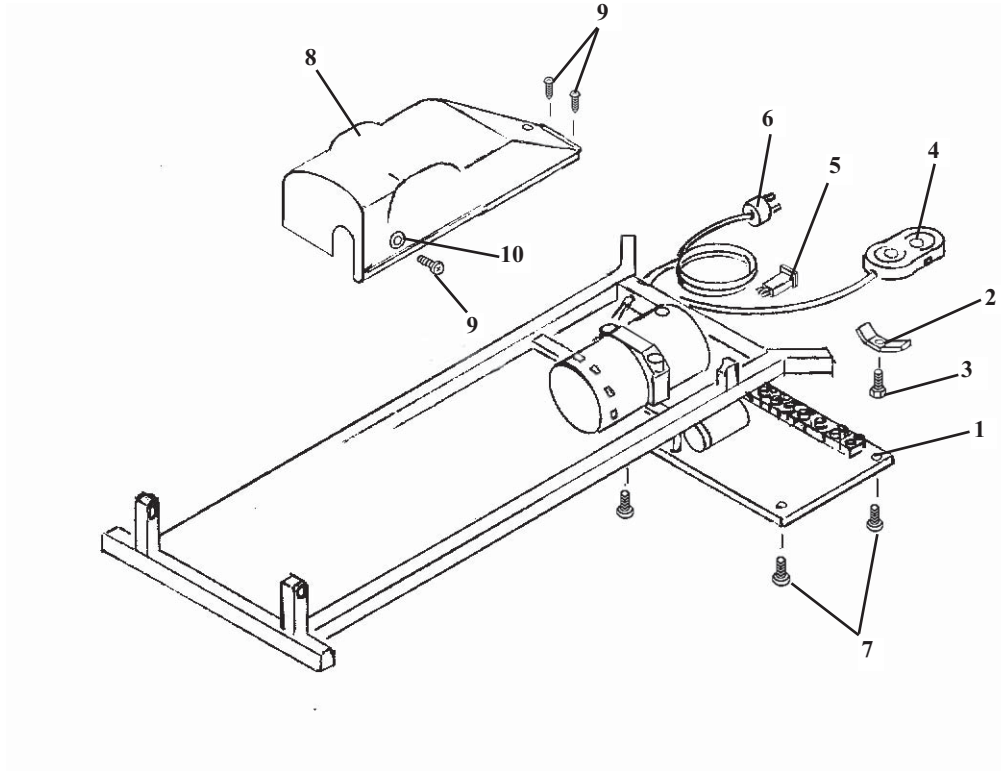
ITEM	PART NO.	DESCRIPTION	QTY.
1	40410	ANKLE REST CUSHION	1
2	56507	BASE PLATE	1
3	30774	COMPRESSION SPRING	1
4	56519	LOCK HANDLE	1
5	56525	GUIDE BLOCK	1
6	56518	GUIDE ROD	2
7	22468	SCREW, WOOD, RD HEAD, #10 X 7/8	6
8	24236	GUARD, TEE HANDLE	1
9	22610	PIN, CLEVIS, 5/16 X 7/8	1
10	56539	GUIDE BLOCK	1
11	56515	SLIDE FRAME ASS'Y	1
12	21010	NUT, HEX, 1/4 - 20 UNC	1
13	20197	BOLT, SOCKET, SHOULDER, 5/16-18 UNC X 3/4	2
14	56512	LINKAGE ARM ASSEMBLY	2
15	22660	ROLL PIN, 1/8 X 5/8	2
16	52190	EXTENSION ROD	1
17	24415	PLASTIC CAP	1
18	22615	PIN, CLEVIS, 5/16 X 2	2
19	22110	SET SCREW, 1/4 - 20 UNC X 1/4	3
20	21710	WASHER, FLAT, 5/16 ID	1
21	21760	WASHER, FLAT, PLASTIC, 0.315 ID X 1/2 OD	1
22	22640	COTTER PIN	1

# HYDRAULICS ASSEMBLY



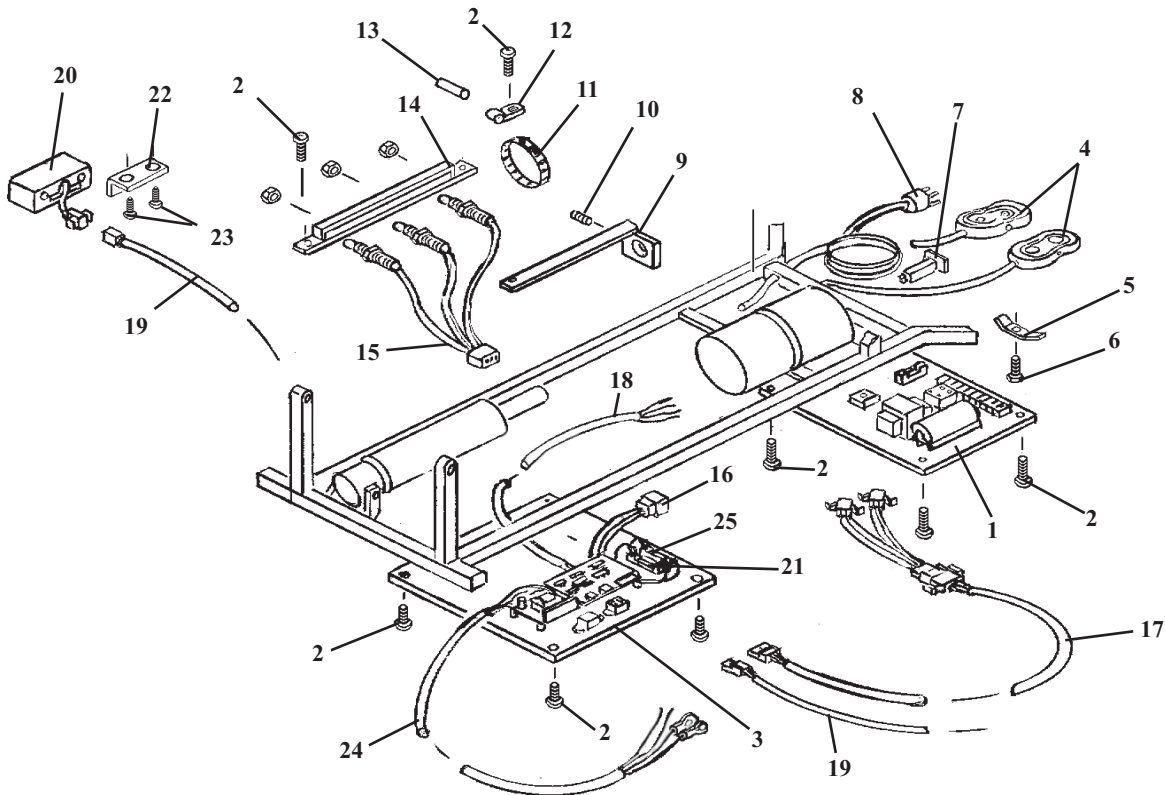
ITEM	PART NO.	DESCRIPTION	QTY.
1	30495	PUMP & MOTOR, (115v)	1
2	23568	POPPET VALVE	1
3	35990	SOLENOID COIL	1
4	36970	VENT CAP	1
5	23133	FITTING 90 DEG-1/8NPT-1/4 COMPRESSION	1
6	23326	PIPE NIPPLE	1
7	23130	FITTING 90 DEG- 1/8MALE-FEMALE	2
8	23110	FITTING 90 DEG- 1/8 JIC - MALE	1
9	45250	HYDRAULIC HOSE, 3/16 X 15"	1
10	56958	CYLINDER, ELEVATION	1
11	23614	LEGRIS HOSE, 1/4 X 18"	1
12	23127	FITTING 90 DEG- 1/8 PIPE	1
13	23577	CONTROL VALVE	1
14	23090	FITTING 90 DEG- 1/8 JIC	1
15	20123	HEX HD BOLT, 1/4-20 UNC X 1	2
16	21640	FLAT WASHER, 9/32ID X 1.00OD	4
17	22895	RUBBER BUSHING (MALE)	4
18	24035	RUBBER BUSHING (FEMALE)	4
19	54168	MOTOR PLATE	1
20	23129	FITTING, 90 DEG- 1/8NPT - 1/4 COMPRESSION	1
21	20020	HEX HD. BOLT, 1/4-20UNX 1.00	2
22	52072	J-CLAMP	1
23	21995	MACHINE SCREW, PAN HEAD, #10-24UNC X 1/2	1

# ASTRO ELECTRICAL ASS'Y



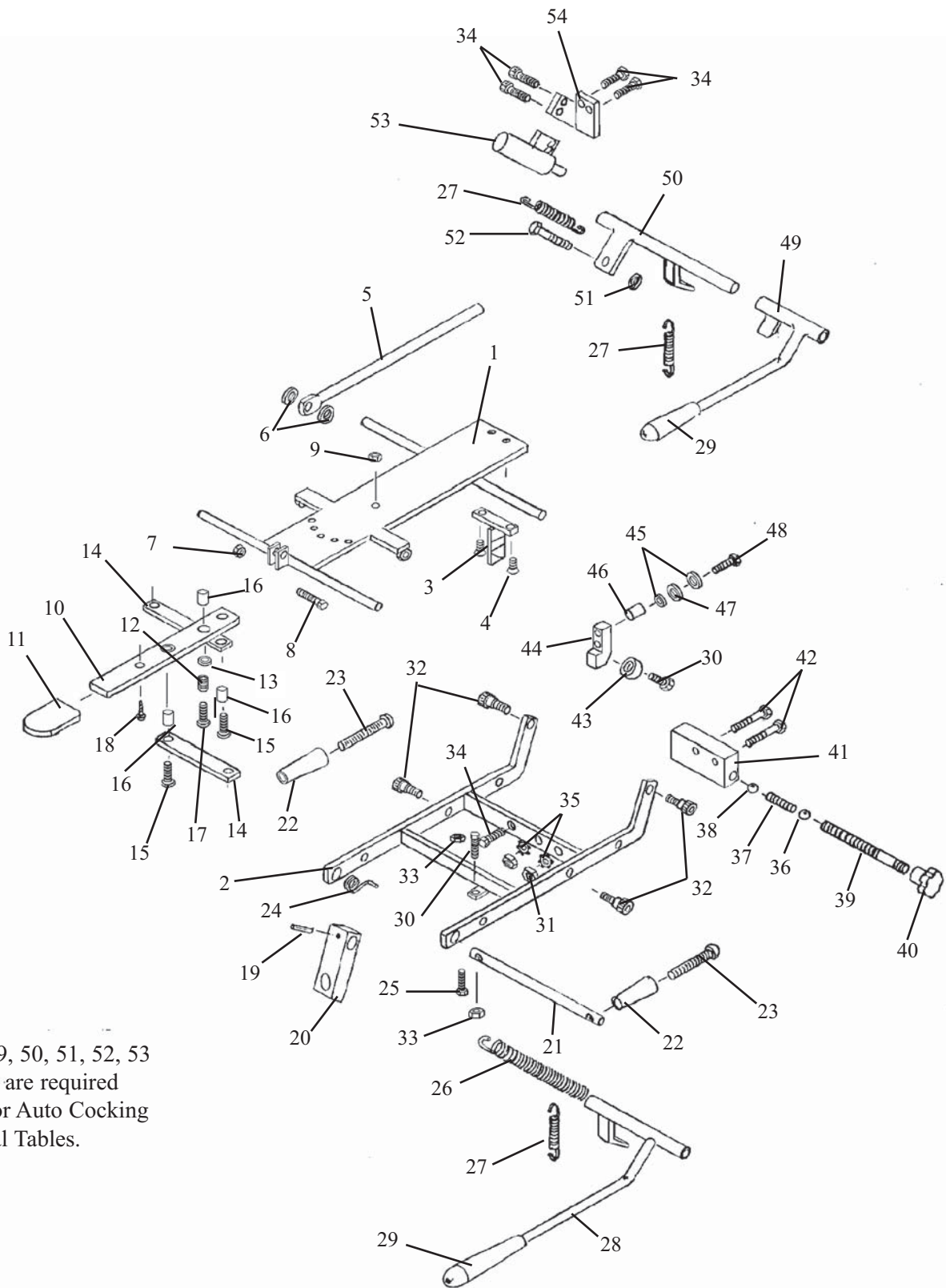
ITEM	PART NO.	DESCRIPTION	QTY.
1	44969	ELECTRICAL UNIT ASS'Y	1
2	52073	CLAMP	1
3	20022	HEX HD. BOLT, 1/4-20UNC X 1	1
4	30910	HEIGHT CONTROL PEDAL	1
5	35216	CIRCUIT BREAKER, 8AMP	1
6	45199	POWER CORD	1
7	21982	PAN HD SCREW, #8-32NC X 1/2	4
8	699195	MOTOR COVER	1
9	21995	PAN HD. MACHING SCREW, #10-24NC X 1/2	3
10	21011	TEE NUT, #10-24NC	1

# ELECTRICAL ASSEMBLY ASTRO ELEVATION EHA



ITEM	PART NO.	DESCRIPTION	QTY.
1	44969	ELECTRICAL UNIT ASS'Y, w/ EHA	1
2	21982	MACHINE SCREW, PAN HD, #8-32UNF X ½	12
3	44970	EHA DRIVER BOARD ASS'Y, NO DROPS	1
4	44081	PEDAL ASS'Y, DIRECTIONAL CONTROL	2
5	52073	CLAMP, WIRE HARNESS	5
6	20022	HEX HD. BOLT, ¼-20UNC X 1	1
7	35216	BREAKER, CIRCUIT, 8AMP	1
8	45192	POWER CORD	1
9	54263	GUIDE COLLAR ASS'Y, ASTRO ELEVATION	1
10	22120	SET SCREW, ¼-20UNC X ½	1
11	24280	ADJUSTABLE CABLE, 2 ½"	1
12	35920	CABLE CLAMP ¼"	1
13	24252	MAGNET	1
14	54259	RAIL ASSEMBLY	1
15	45067	WIRE ASSEMBLY, SENSOR	1
16	45200	CABLE ASSEMBLY, BOARD - SENSOR	1
17	45201	CABLE ASSEMBLY, BOARD - PEDAL	1
18	45193	CABLE ASSEMBLY, AC POWER	1
19	45100	WIRE ASSEMBLY, BOARD - CONRTOL BOX	1
20	44027	EHA CONTROL BOX	1
21	36360	FUSE, 6 AMP	1
22	54200	SUPPORT BRACKET	1
23	22461	PAN HD. SCREW, #10 X 5/8	2
24	45193	CABLE ASSEMBLY, AC POWER	1
25	36325	FUSE, .25 AMP	1

# STRAIGHT DROP HEAD ASSEMBLY

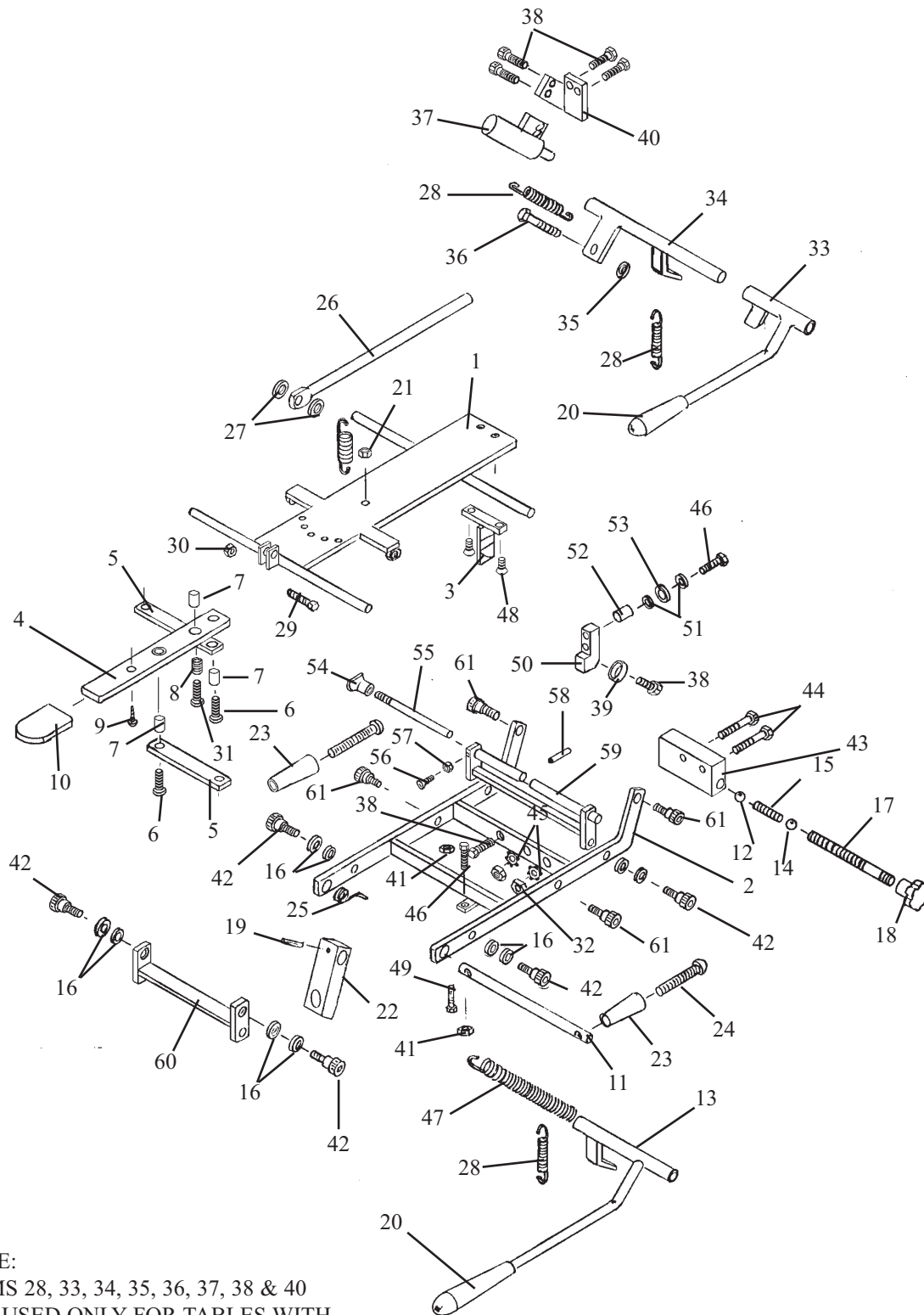


Items 49, 50, 51, 52, 53 and 54 are required only for Auto Cocking Cervical Tables.

# STRAIGHT DROP HEAD ASSEMBLY

ITEM	PART NO.	DESCRIPTION	QTY.
1	56011	FASTENER PLATE ASS'Y, '89 STRAIGHT DROP HD	1
2	57201	OUTSIDE DROP FRAME ASS'Y, '89 FM HEAD	1
3	55850	TEE WEDGE ASSEMBLY	1
4	22017	SCREW, MACHINE, FLAT HEAD, ¼ - 20 UNC X ½	2
5	55929	CENTER ROD ASSEMBLY	1
6	21616	WASHER, PLASTIC, ¼ ID X ¾ OD	2
7	21020	NUT, HEX, ¼ - 28 UNF	1
8	20115	BOLT, HEX HEAD, ¼ - 28 UNF X ¾	1
9	21450	NUT, HEX, # 10 - 24 UNC	1
10	57221	ADJUSTMENT ARM, 1/8 X 7/8 X 8	1
11	24236	GUARD, TEE HANDLE	1
12	30722	SPRING, COMPRESSION, 0.235 ID X 5/16 OD X ½	1
13	21610	WASHER, PLASTIC, 0.26 ID X ½ OD	2
14	57175	LINKAGE BAR, 1/8 X ½ X 3 13/16	2
15	21995	SCREW, MACHINE, PAN HEAD, # 10 - 24 UNC X ½	2
16	22860	BUSHING, 0.465 ID X 9/16 OD X 19/32	3
17	22003	SCREW, MACHINE, PAN HEAD, # 10 - 24 UNC X ¾	1
18	22300	SCREW, MACHINE, # 8 - 32 UNC X ¼	1
19	22660	ROLL PIN, 1/8 X 5/8	1
20	54107	BLOCK, ADJUSTING, '89 HEAD, 5/8 X 1 X 2 15/16	1
21	57205	ROD, TILT HANDLE, 3/8 RD X 5 ½	1
22	24020	HANDLE	2
23	22050	SCREW, MACHINE, RD HEAD, ¼ - 20 - UNC X 2 ½	2
24	30871	SPRING, TORSION	1
25	20024	BOLT, SOCKET HEAD, ¼ - 20 UNC X 1 ¼	1
26	30785	SPRING, TENSION (HYLO TABLES)	1
27	30725	SPRING, EXTENSION, ¼ ID X 5/16 X 1	1
28	56067	COCKING HANDLE ASS'Y, F/M '89 HEAD	1
29	24010	HANDLE GRIP	1
30	20020	BOLT, HEX HEAD, ¼ - 20 UNC X 1 ¼	2
31	21112	NUT, HEX, 5/16 X 18 UNC	2
32	20197	BOLT, SOCKET HEAD, 5/16 - 18 UNC, SHOULDER, 3/8 X 3/8	4
33	21012	NUT, JAM, ¼ - 20 UNC2	2
34	20007	BOLT, HEX HEAD, ¼ - 20 UNC X 5/8	6
35	21755	WASHER, STAR, 5/16 ID	2
36	22701	BALL, STEEL, ¼ RD	1
37	30721	SPRING, COMPRESSION, 0.175 ID X 23/64 OD X 1 1/8	1
38	22700	BALL, BEARING, 3/8 RD	1
39	57184	STUD, TENSION ADJUSTMENT, 5/16 RD X 2 ¼	1
40	24150	KNOB, TENSION ADJUSTMENT	1
41	55849	BLOCK, DROP, 1 X 1 7/16 X 2 3/32	1
42	20235	BOLT, HEX HEAD, 5/16 - 18 UNC X 1 ¾	2
43	22805	BALL, BEARING, ¼ ID	1
44	57102	BLOCK, BACKER BEARING, STRAIGHT DROP, ¾ X 9/16 X 1 ¼	1
45	21620	WASHER, FLAT, ¼ ID X 9/16 OD X 3/16	2
46	50720	SPACER, 3/8 ID X ½ OD X ½	1
47	21710	WASHER, FLAT, 5/16 ID X 0.688 OD	1
48	20022	BOLT, HEX HEAD, ¼ - 20 UNC X 1	1
49	56069	COCKING HANDLE ASS'Y, F/M '89 HEAD (AUTO DROP)	1
50	57140	COCKING LEVER ASS'Y, F/M '89 HEAD (AUTO DROP)	1
51	21210	NUT, HEX, 3/8 - 16 UNC (AUTO DROP)	1
52	20320	BOLT, HEX HEAD, 3/8 - 16 UNC X ¾ (AUTO DROP)	1
53	625020	COCKING CYLINDER, ¾ RD w/FITTINGS (AUTO DROP)	1
54	57194	BRACKET, CYLINDER ADAPTER (AUTO DROP)	1

# FORWARD MOTION HEAD FRAME



NOTE:  
 ITEMS 28, 33, 34, 35, 36, 37, 38 & 40  
 ARE USED ONLY FOR TABLES WITH  
 AUTO COCKING CERVICAL.



# FORWARD MOTION HEAD FRAME

ITEM	PART NO.	DESCRIPTION	QTY
1	56059	OUTSIDE DROP FRAME ASS'Y	1
2	57201	OUTSIDE HEAD FRAME ASS'Y	1
3	55850	TEE WEDGE	1
4	57221	ADJUSTMENT ARM, HEAD CUSHION	1
5	57175	LINKAGE BAR, 1/8 X 1/2 X 3 9/16	2
6	21995	PAN HD. MACHINE SCREW, #10-24 NC X 1/2	2
7	22860	BUSHING, 3/16 ID X 1/4 OD	3
8	30722	COMPRESSION SPRING, 1/4 ID X 5/16 OD	1
9	22300	MACHINE SCREW, #8-32 NC X 1/4	1
10	24236	PLASTIC CAP	1
11	57205	SUPPORT ROD, 3/8 RD. X 6 1/16	1
12	22700	BALL, STEEL, 3/8 DIA	1
13	56067	COCKING LEVER ASS'Y	1
14	22701	BALL, BEARING, 1/4 DIA	1
15	30710	COMPRESSION SPRING, 9/64 ID X 1/4 OD	1
16	21760	PLASTIC WASHER, 5/16 ID X 1/2 OD	12
17	57184	TENSION ADJUSTMENT SCREW, 5/16 RD. X 2 3/4	1
18	24150	KNOB, TENSION ADJUSTMENT	1
19	22660	ROLL PIN, 1/8 X 5/8	1
20	24010	COCKING HANDLE	1
21	21450	HEX NUT, #10-24 NC	1
22	54107	ADJUSTING BLOCK, 5/8 X 1.00 X 2 15/16	1
23	24020	ADJUSTMENT HANDLE	2
24	22050	MACHINE SCREW, RD. HD., 1/4-20 NC X 2 1/2	2
25	30871	TORSION SPRING	1
26	55929	CENTER BAR,	1
27	21616	WASHER, FLAT, PLASTIC, 1/4 ID X 3/4 OD	2
28	30725	RETURN SPRING	2
29	20115	HEX.HD BOLT, 1/4-28 NF X 3/4	1
30	21020	NUT, HEX, 1/4-28 NF	1
31	22003	PAN HD. SCREW, #10-24 UNC X 3/4	1
32	21112	HEX.NUT, 5/16-18 UNC	2
33	56069	COCKING HANDLE ASS'Y (AUTO DROPS)	1
34	57140	COCKING LEVER ASS'Y (AUTO DROPS)	1
35	21210	HEX.NUT, 3/8-16 NC (AUTO DROPS)	1
36	20320	HEX.BOLT, 3/8-16 NC X 3/4 (AUTO DROPS)	1
37	625020	COCKING CYLINDER, 3/4 (AUTO DROPS)	1
38	20007	HEX.HD.BOLT, 1/4-20 NC X 5/8 (AUTO DROPS)	6
39	22805	BEARING	1
40	57194	CYL.MT.BRACKET (AUTO DROPS)	1
41	21012	NUT, JAM, 1/4-20 UNC	2
42	20002	SOCKET HD. BOLT, 1/4-20 NC X 1 1/4	6
43	55849	DROP BLOCK	1
44	20235	HEX.HD.BOLT, 5/16-18 NC X 1 3/4	2
45	21755	WASHER, STAR 5/16ID	2
46	20020	HEX.HEAD BOLT, 1/4-20 NC X 1 1/4-GR 5	3
47	30785	TENSION SPRING (HYLO TABLES ONLY)	1
48	22017	FLAT HD. SCREW, 1/4-20UNC X 3/4	2
49	20024	BOLT, SOCKET HEAD, 1/4 - 20 UNC X 1 1/4	1
50	57103	BLOCK	1
51	21620	FLAT WASHER 1/4ID X 9/16OD	2
52	50720	SPACER	1
53	21810	FLAT WASHER 3/8ID X 13/16OD	1
54	24160	LOCK KNOB	1
55	55932	LOCK ROD	1
56	21981	PLASTIC FLAT HD. SCREW, #8-32 NC X 1/2	1
57	21420	HEX.NUT, #8-32NC	1
58	22657	ROLL PIN 1/8 X 3/8	1
59	56060	STABILIZER BRACE ASS'Y	1
60	57144	FRONT ROCKER FRAME ASS'Y	1
61	20197	SOCKET HD. SHOULDER BOLT, 5/16-18 UNC	4



# LLOYD TABLE COMPANY

## PRODUCTS & ACCESSORIES



# LLOYD



# TABLE COMPANY



102-122 W. Main Street • Lisbon, Iowa 52253-0899 • Phone 319-455-2110  
Call Toll Free 1-800-553-7297

FAX: 319-455-2166

[www.lloydtable.com](http://www.lloydtable.com)